

# Births and Deaths Report Q1 2004

**Ratio of Births to Deaths  
Q1 2004**

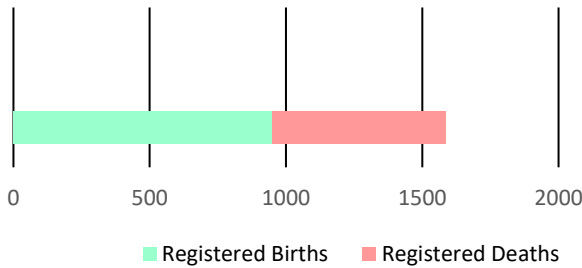


Figure 1

The first quarter of 2004 recorded an increase of **3 percent** in births from **921** in 2003 to **949** in 2004. Males showed a slight increase of **7.1 percent** however females saw a decline of **1.3 percent**.

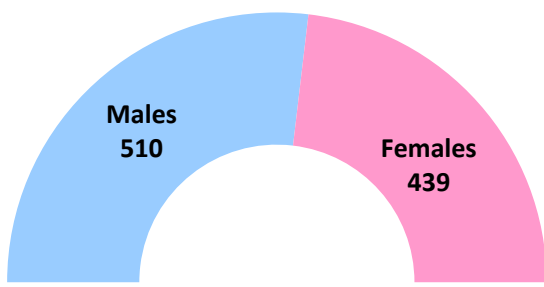
There was an increase in the number of deaths recorded in the first quarter of 2004. Males declined by **3.8 percent** and the females increased by **22 percent**.

**Table 1: Monthly Population Change**

Month	Births	Deaths	Natural Increase
January	355	284	71
February	295	151	144
March	299	201	98
<b>TOTAL</b>	<b>949</b>	<b>636</b>	<b>313</b>

**Table 2: Quarterly Population Change**

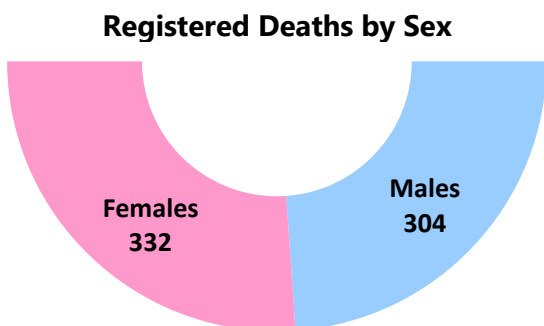
	Male	Female	Total
<b>Estimated Population at End of Q4 2003</b>	131,236	140,967	<b>272,203</b>
Births	510	439	<b>949</b>
Deaths	304	332	<b>636</b>
<b>Estimated Population at Q1 2004</b>	<b>131,373</b>	<b>140,996</b>	<b>272,369</b>



**Registered Births by Sex**

Figure 2

For the first quarter in 2004, there were **439** female registered births and **510** males. For the similar period in 2003, there were **476** males and **445** females.



**Registered Deaths by Sex**

Figure 3

Registered deaths in the period under review for 2004 were reported as follows: males – **304** and females – **332**.

**Table: 3 Births by Age of Mother and Father**

Age Group	Q1 2004		Q1 2003	
	Number of Mothers	Number of Fathers	Number of Mothers	Number of Fathers
19 and Under	120	25	154	34
20 - 29	482	359	458	367
30 - 39	311	361	278	371
40 - 49	33	147	28	114
50 - 59	0	14	0	15
60 - 69	0	1	0	0
70-79	0	0	0	0
Not Stated	3	42	3	20
<b>TOTAL</b>	<b>949</b>	<b>949</b>	<b>921</b>	<b>921</b>

The average age of a mother giving birth was **26.6** years, with **50.8 percent (482)** of the births coming from mothers in the 20-29 age group.

The number of births from mothers in the 40-49 age group increased to **33**.

For the period January to March 2004, the youngest mother was **one 13-year-old**, followed by **two 14-year-olds** while the oldest mothers were registered as **46 years old** which was **1 year** less than the previous year.

There was **one 17-year-old** registered as the youngest father, followed by **six 18-year-olds** and **eighteen 19-year-olds**, while the oldest was **65 years, four years** younger than in the first quarter of 2003.

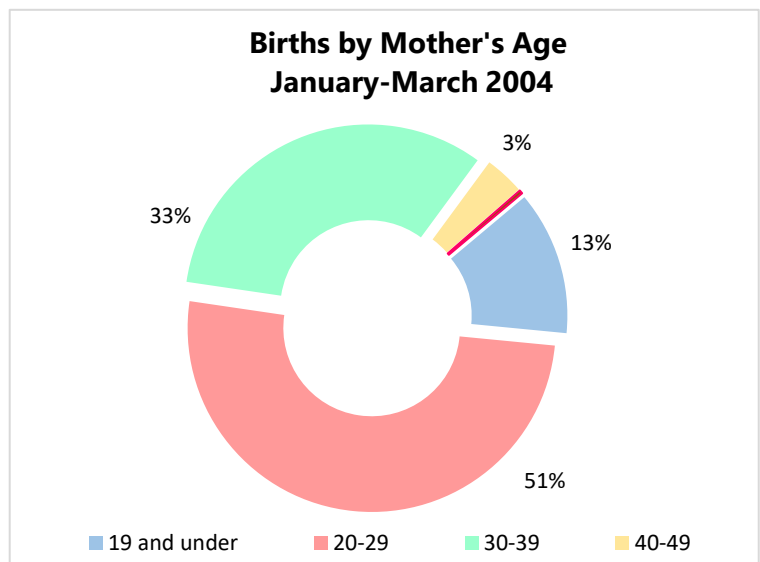
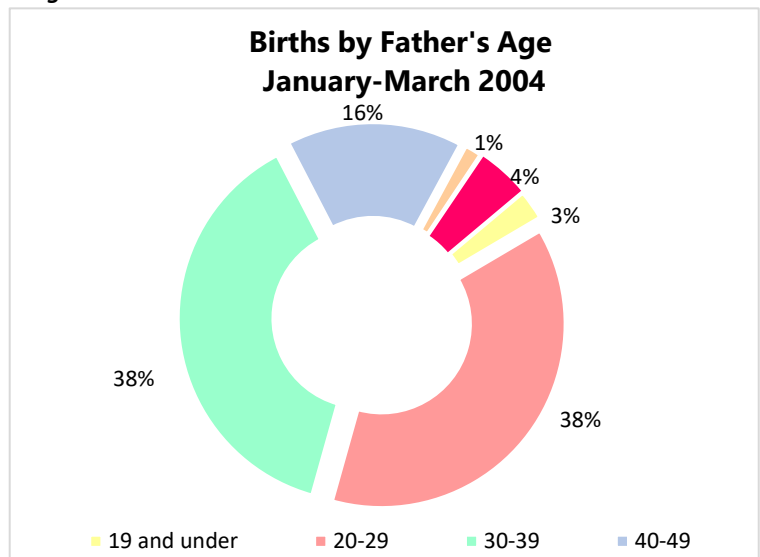


Figure 4



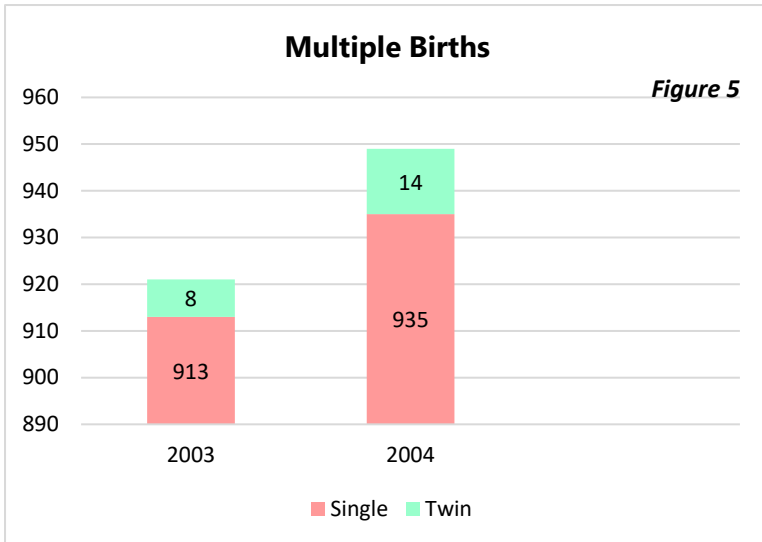


Figure 5

There were **935** registered single babies in this quarter compared to **913** in the comparative period in 2003.

The number of twins increased slightly from **8** in the first quarter of 2003 to **14** in this quarter.

No triplets were born in the period under review in 2004.

Figure 6

The number of babies from St. Michael recorded were **342 (36 percent)**. This parish recorded the highest number of births.

The number of babies for the quarter under review born in Christ Church was **157** which represents **16.5 percent**.

The least number of babies were from St. Joseph - **16**.

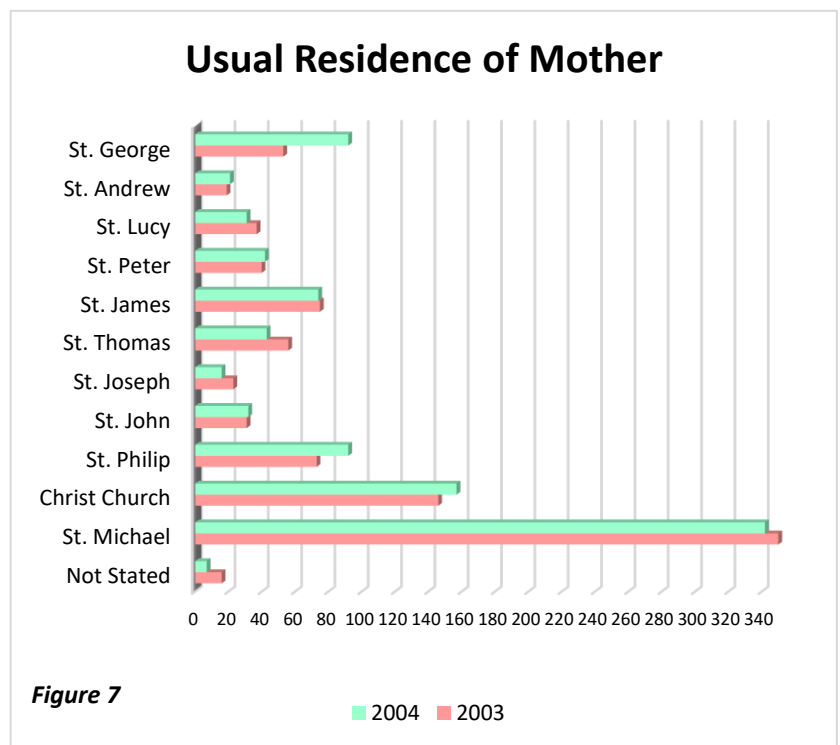


Figure 7

Table: 4 Live Births vs Still-Born

	Q1 2004	Q1 2003
Live Births	946	919
Still-Born	3	2
<b>TOTAL</b>	<b>949</b>	<b>921</b>

There were **3** still-born births recorded in this quarter, **one** more than the comparative period in 2003.

The average age of death during the period was **70.4** years.

The highest age group in registered deaths was seen in the **80-89 (25.2 percent)**, followed by **70-79 (23.6 percent)**.

In January to March 2004, the larger number of deaths was attributed to females – **332**, when compared to **304** males.

With regards to marital status in 2004, the single persons accounted for **31.6 percent** of all deaths, followed by married which stood at **27.4 percent**.

For Q1 of 2004, **St. Michael**, had the largest number of registered deaths – **230**, a slight decrease of **3.4 percent** compared to 238 in 2003. However, the least number of deaths recorded in 2004 was in **St. Joseph - 15**.

**Table: 5 Deaths by Age Group**

Age Group	2004	2003
9 and Under	22	9
10-19	4	3
20-29	15	11
30-39	19	21
40-49	40	36
50-59	46	44
60-69	56	61
70-79	150	123
80-89	160	160
90-99	86	84
100-109	6	4
N/S	32	32
<b>TOTAL</b>	<b>636</b>	<b>588</b>

**Table: 6 Deaths by Residence**

Parish	2004	2003
St. Michael	230	238
Christ Church	121	108
St. Philip	38	42
St. John	22	10
St. Joseph	15	20
St. Thomas	26	25
St. James	54	38
St. Peter	28	27
St. Lucy	36	17
St. Andrew	17	11
St. George	39	48
Not Stated	10	4
<b>TOTAL</b>	<b>636</b>	<b>588</b>

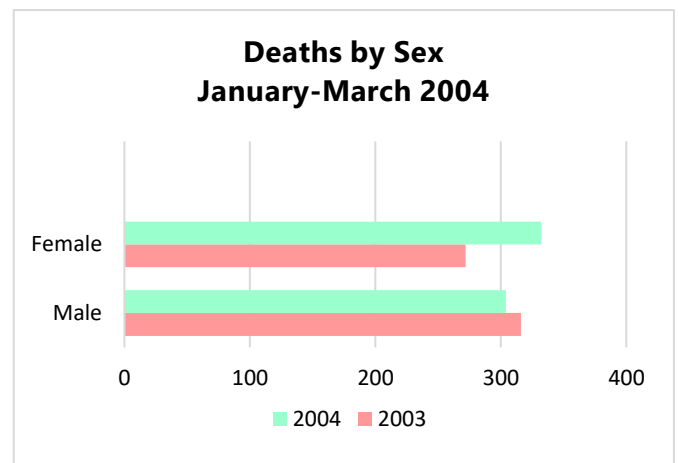


Figure 8

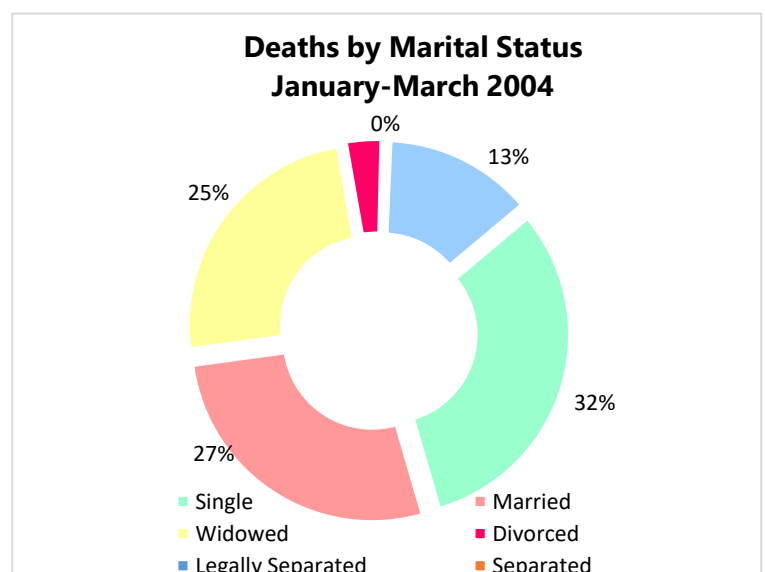


Figure 9