

Births and Deaths Report Q2 2004

**Ratio of Births to Deaths
Q2 2004**

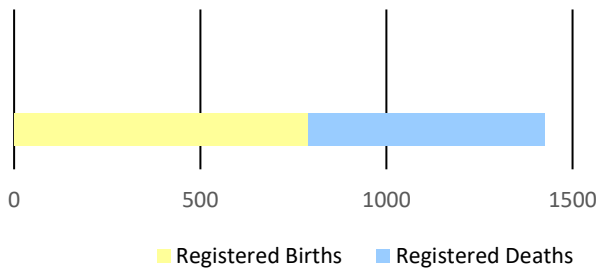


Figure 1

The second quarter of 2004 recorded a reduction of **5.4 percent** in births from **835** in 2003 to **790** in 2004. Both males and females showed decreases of **2 percent** and **8.7 percent** respectively.

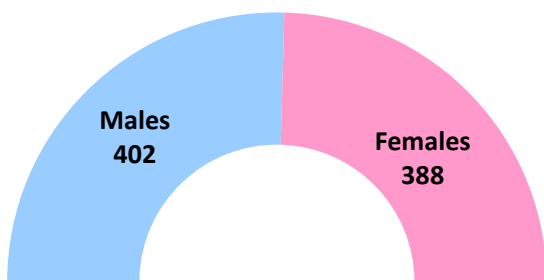
Both sexes showed an increase in the number of deaths recorded in the second quarter of 2004.

Table 1: Monthly Population Change

Month	Births	Deaths	Natural Increase
April	269	187	82
May	258	194	64
June	263	215	48
TOTAL	790	596	194

Table 2: Quarterly Population Change

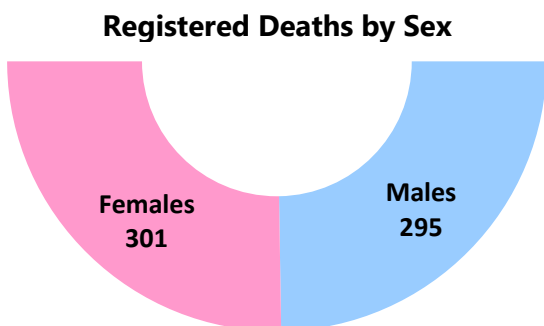
	Male	Female	Total
Estimated Population at End of Q1 2004	131,373	140,996	272,369
Births	402	388	790
Deaths	295	301	596
Estimated Population at Q2 2004	131,411	141,005	272,416



Registered Births by Sex

Figure 2

For the second quarter in 2004, there were **388** female registered births and **402** males. For the similar period in 2003, there were **410** males and **425** females.



Registered Deaths by Sex

Figure 3

Registered deaths in the period under review for 2004 were reported as follows: males – **295** and females – **301**. Males increased by **2.4 percent** and the females increased by **6.7 percent**.

Table: 3 Births by Age of Mother and Father

Age Group	Q2 2004		Q2 2003	
	Number of Mothers	Number of Fathers	Number of Mothers	Number of Fathers
19 and Under	99	25	125	26
20 - 29	409	283	422	345
30 - 39	257	334	268	310
40 - 49	24	109	17	114
50 - 59	0	15	0	16
60 - 69	0	1	0	0
70-79	0	1	0	0
Not Stated	1	22	3	24
TOTAL	790	790	835	835

The average age of a mother giving birth was **26.5** years, with **51.8 percent (409)** of the births coming from mothers in the 20-29 age group.

The number of births from mothers in the 40-49 age group increased to **24**.

For the period April to June 2004, the youngest mothers were **three 14-year-olds**, followed by **six 15-year-olds**, while the oldest mother were registered as **47 years old**.

There was **one 16-year-old** registered as the youngest father, followed by **four 17 year olds**, while the oldest was **75 years, nineteen years** older than in the second quarter of 2003.

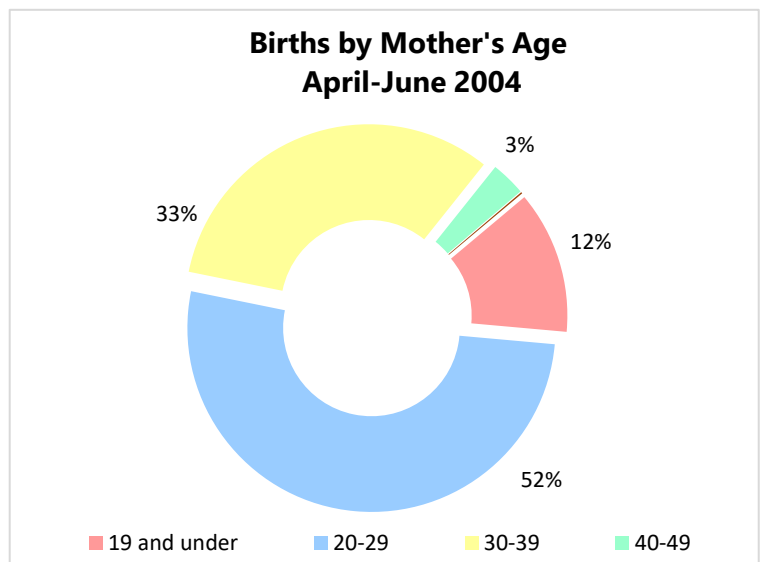
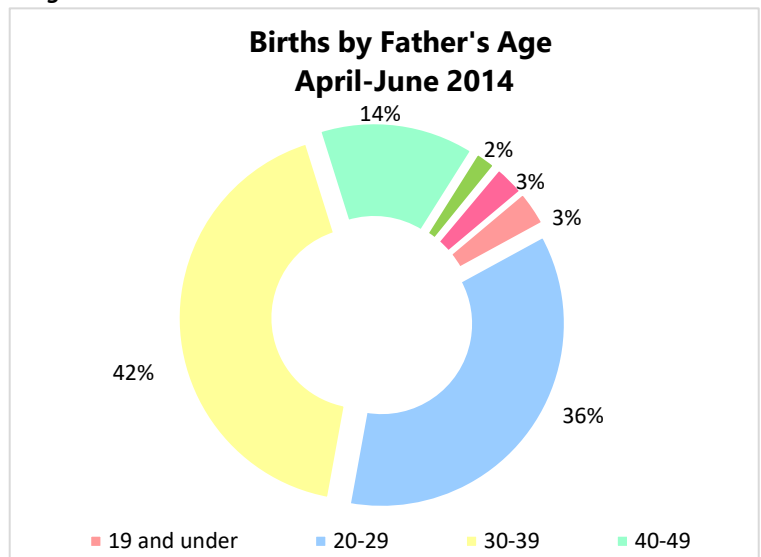


Figure 4



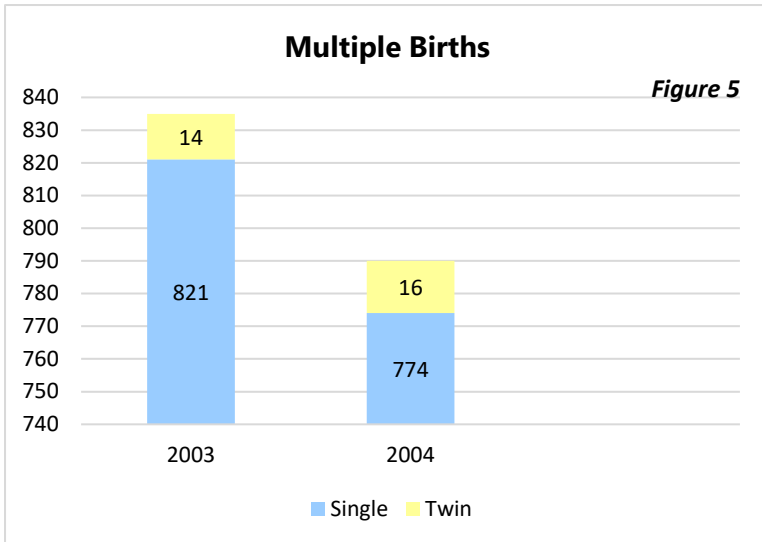


Figure 5

There were **774** registered single babies in this quarter compared to **821** in the comparative period in 2003.

There were **8** sets of twins recorded in quarter 2 2004 compared to **7** sets in the comparative period in 2003.

No triplets were born in the period under review in 2004.

Figure 6

The number of babies from St. Michael recorded were **279 (35.3 percent)**. This parish recorded the highest number of births, noting a decrease by **14.4 percent**.

The number of babies for the quarter under review born in Christ Church was **144** which represents **18.2 percent**.

The least number of babies were from St. Andrew - **12**.

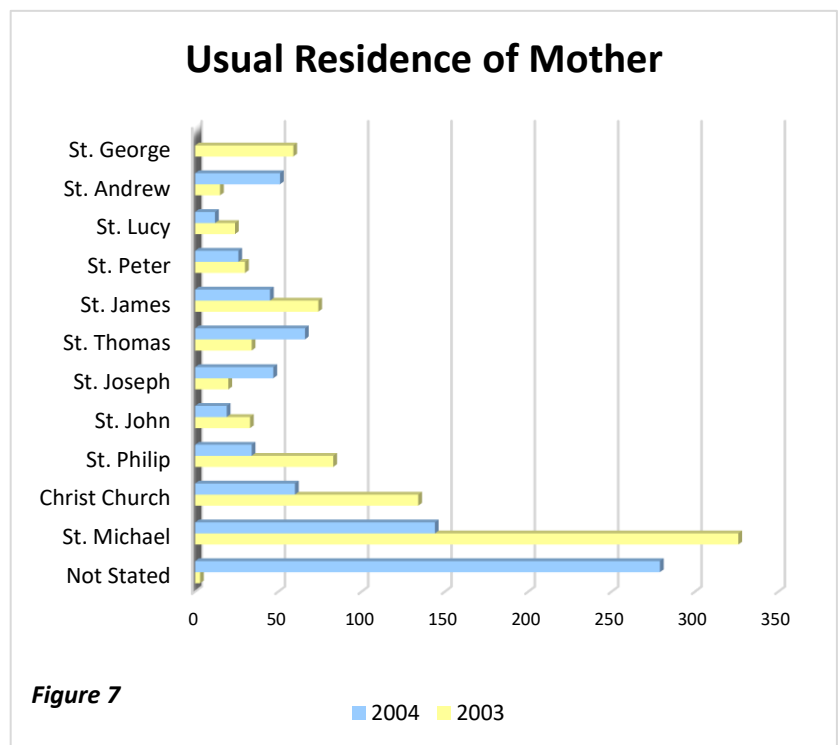


Figure 7

Table: 4 Live Births vs Still-Born

	Q2 2004	Q2 2003
Live Births	787	833
Still-Born	3	2
TOTAL	790	835

There were **3** still-born births recorded in this quarter, **one** more than the comparative period in 2003.

The average age of death during the period was **70.9** years.

The highest age group in registered deaths was seen in the **80-89 (26.2 percent)**, followed by **70-79 (24.3 percent)**.

In April to June 2004, the larger number of deaths was attributed to females – **301**, when compared to **295** males.

With regards to marital status in 2004, the single persons accounted for **37.4 percent** of all deaths, followed by married which stood at **29.4 percent**.

For Q2 of 2004, **St. Michael**, had the largest number of registered deaths – **225**, an increase of **4.7 percent** compared to 215 in 2003. However, the least number of deaths recorded in 2004 was in **St. Andrew - 9**.

Table: 5 Deaths by Age Group

Age Group	2004	2003
9 and Under	17	13
10-19	4	2
20-29	10	19
30-39	15	15
40-49	34	33
50-59	54	45
60-69	63	61
70-79	145	127
80-89	156	144
90-99	73	73
100-109	5	7
N/S	20	31
TOTAL	596	570

Table: 6 Deaths by Residence

Parish	2004	2003
St. Michael	225	215
Christ Church	108	87
St. Philip	67	40
St. John	24	12
St. Joseph	16	13
St. Thomas	33	23
St. James	35	35
St. Peter	23	22
St. Lucy	27	19
St. Andrew	9	8
St. George	27	40
Not Stated	2	56
TOTAL	596	570

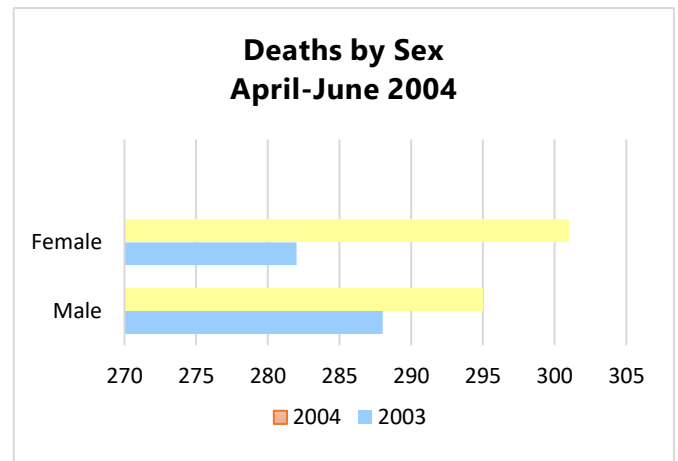


Figure 8

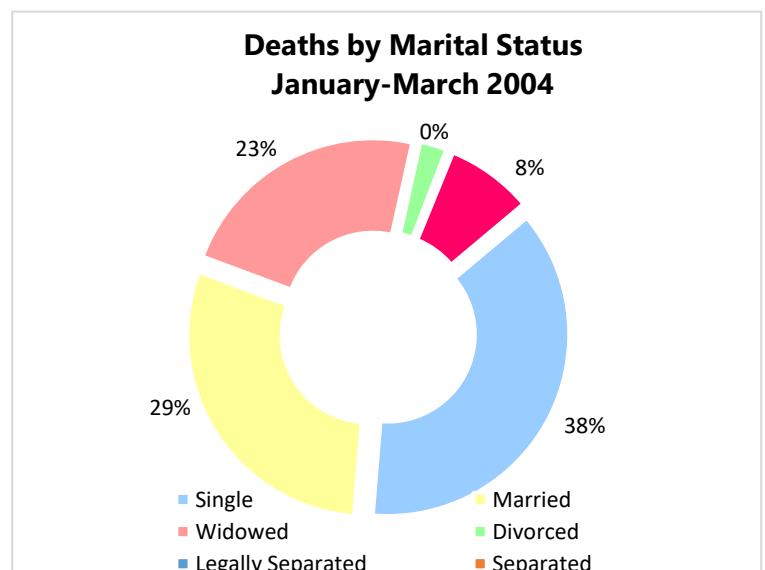


Figure 9