

Births and Deaths Report Q3 2003

**Ratio of Births to Deaths
Q3 2003**

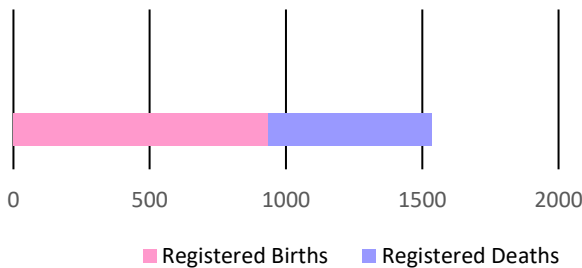


Figure 1

There were **937** births recorded in this quarter. The number of births with regards to males were higher than that of females. When a comparison was done between quarter 3 2002 and 2003, there was a significant increase of **16.3 percent** in the total births.

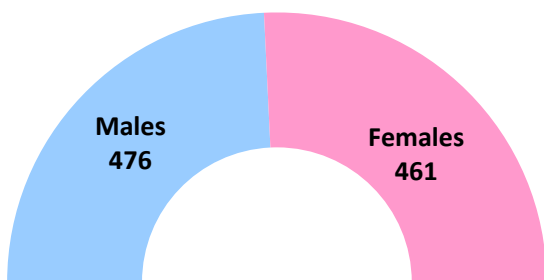
The number of registered deaths were **598** for the period under review. This showed a slight increase (**15.9 percent**) in contrast with the same period of the prior year.

Table 1: Monthly Population Change

Month	Births	Deaths	Natural Increase
July	306	231	75
August	290	147	143
September	341	220	121
TOTAL	937	598	339

Table 2: Quarterly Population Change

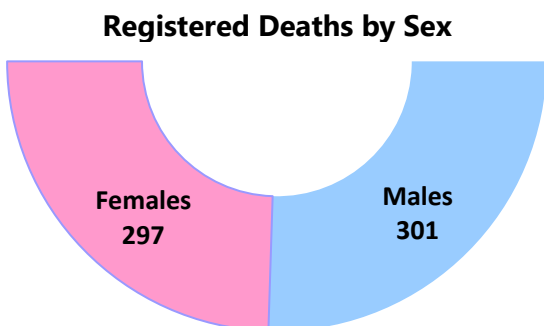
	Male	Female	Total
Estimated Population at Q2 2003	130,870	140,738	271,608
Births	476	461	937
Deaths	297	301	598
Estimated Population at Q3 2003	130,980	140,820	271,800



Registered Births by Sex

Figure 2

For the third quarter in 2003, there were **461** female registered births and **476** males. For the similar period in 2002, there were **431** males and **375** females.



Registered Deaths by Sex

Figure 3

Registered deaths in the period under review for 2003 were reported as follows: males – **297** and females – **301**. In 2002 there were **242** males, and **274** females recorded, which shows a decrease in both males (**22.7 percent**) and females (**9.9 percent**).

Table: 3 Births by Age of Mother and Father

Age Group	Q3 2003		Q3 2002	
	Number of Mothers	Number of Fathers	Number of Mothers	Number of Fathers
19 and Under	114	25	116	26
20 - 29	461	376	369	316
30 - 39	329	373	281	330
40 - 49	31	126	39	111
50 - 59	0	18	0	16
60 - 69	0	0	0	0
70-79	0	0	0	0
Not Stated	2	19	1	7
TOTAL	937	937	806	806

The average age of a mother giving birth was **26.8** years, with **49.1 percent (461)** of the births coming from mothers in the 20-29 age group.

The number of births from mothers in the 40-49 age group was recorded as **31**, which was **8** lower than that in quarter 3 of 2002.

For the period July to September 2003, the youngest mothers were four **15 year olds**, followed by **ten 16 year olds and twenty-eight 17 year olds**, while the oldest mother registered was **47 years, three years** older the same as that in 2002 quarter 3.

There were four **17 year olds** registered as the youngest fathers, followed by **eight 18 year olds and thirteen 19 year olds**, while the oldest was **58 years, one year** younger than in the third quarter of 2002.

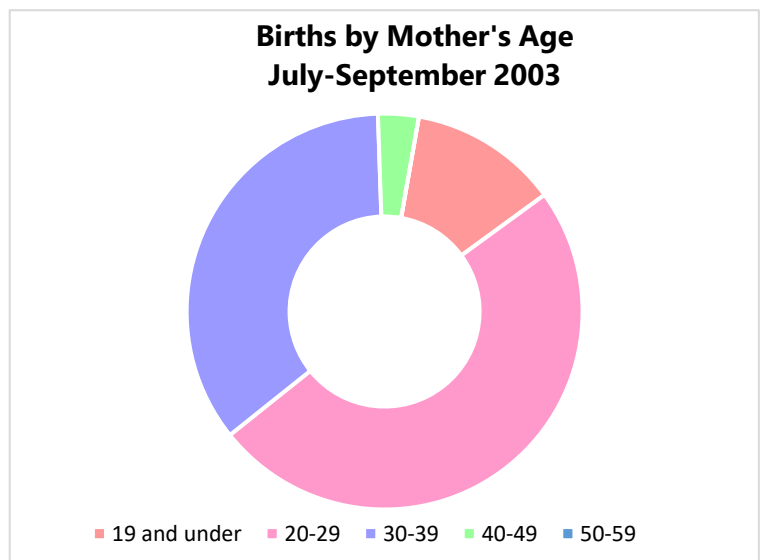
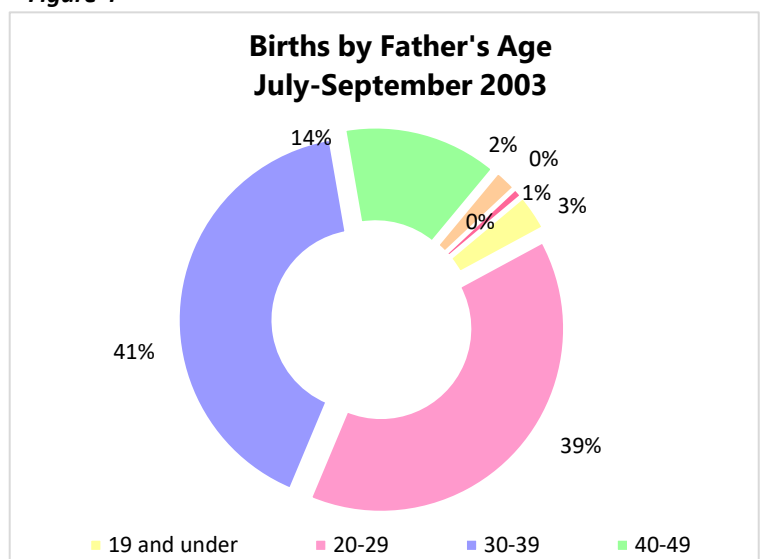


Figure 4



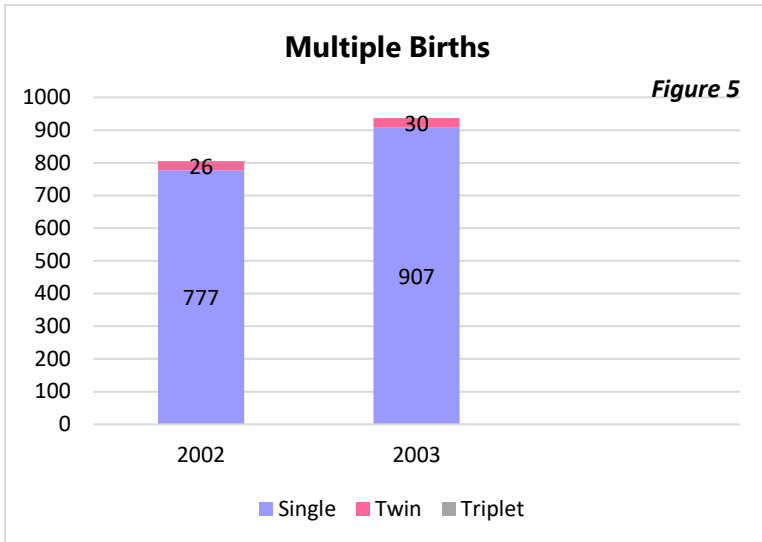


Figure 5

There were **907** single babies registered in the review period. This shows an increase of **16.7 percent** compared to quarter 3 in 2002.

The multiple births registered were **15 sets** of twins, **two** more sets than the third quarter of the comparative year, this represents **3.2 percent** of total births.

There were **zero** triplets born in the period under review in 2003 whereas **1** set of triplets was registered in quarter 2 2002.

Figure 6

The number of babies from St. Michael recorded were **373 (39.8 percent)**. This parish recorded the highest number of births. This represents an increase of **16.2 percent**.

The number of babies for the quarter under review born in St. John and St. Lucy were **36 (3.8 percent)** and **34 (3.6 percent)** respectively.

Christ Church recorded the second highest number of births (**155**).

The least number of babies were from St. Joseph and St. Andrew, both recorded **16**.

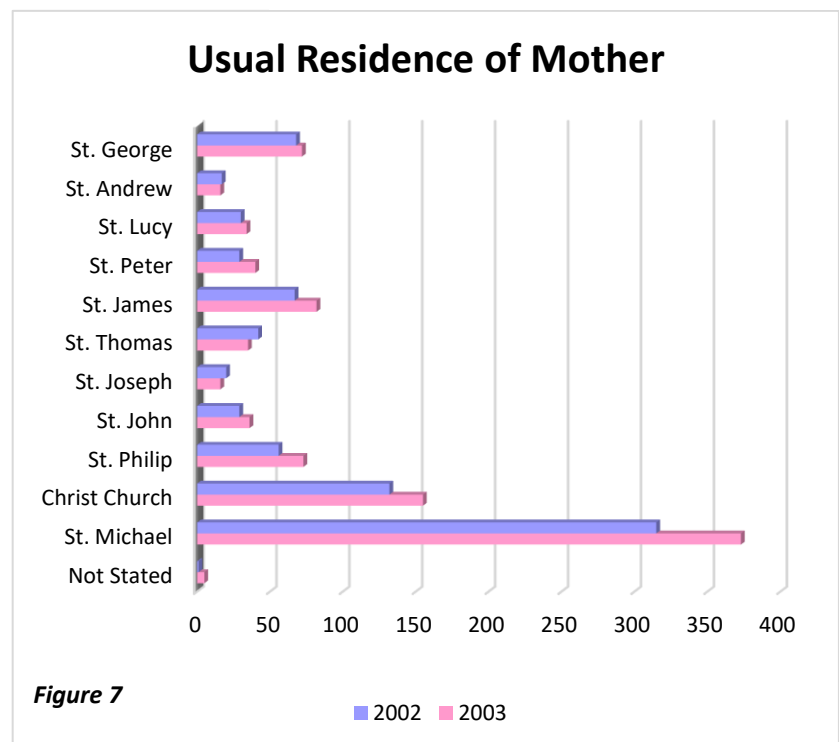


Figure 7

■ 2002 ■ 2003

Table: 4 Live Births vs Still Born

	Q3 2003	Q3 2002
Live Births	930	804
Still Born	7	2
Total	937	806

There were **7** still births recorded in the third quarter of 2003, **five** more than the comparative period in 2002.

The average age of death during the period was **72.6** years.

The highest age group in registered deaths was seen in the **80-89 (32.7 percent)**, followed by **70-79 (21.2 percent)**.

In July to September 2003, the larger number of deaths was attributed to females – **301**, when compared to **297** males.

With regards to marital status in 2003, the married persons accounted for **34.8 percent** of all deaths, followed by single which stood at **32.4 percent**.

For Q3 of 2003, **St. Michael**, had the largest number of registered deaths – **203**, a reduction of **8.1 percent**. However, the least number of deaths were recorded in 2003 was in **St. Thomas (12)** followed by **St. Andrew (10)**.

Table: 5 Deaths by Age Group

Age Group	2003	2002
9 and Under	16	18
10-19	2	7
20-29	14	11
30-39	10	14
40-49	25	36
50-59	38	37
60-69	78	53
70-79	127	113
80-89	192	141
90-99	74	52
100-109	4	7
N/S	18	27
TOTAL	598	516

Table: 6 Deaths by Residence

Parish	2003	2002
St. Michael	203	221
Christ Church	100	98
St. Philip	58	41
St. John	22	24
St. Joseph	22	14
St. Thomas	12	15
St. James	34	33
St. Peter	21	23
St. Lucy	16	14
St. Andrew	10	10
St. George	32	18
Not Stated	68	18
TOTAL	598	516

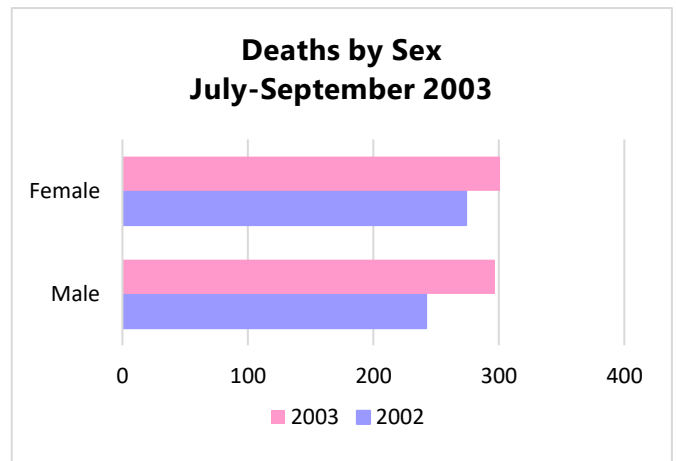


Figure 8

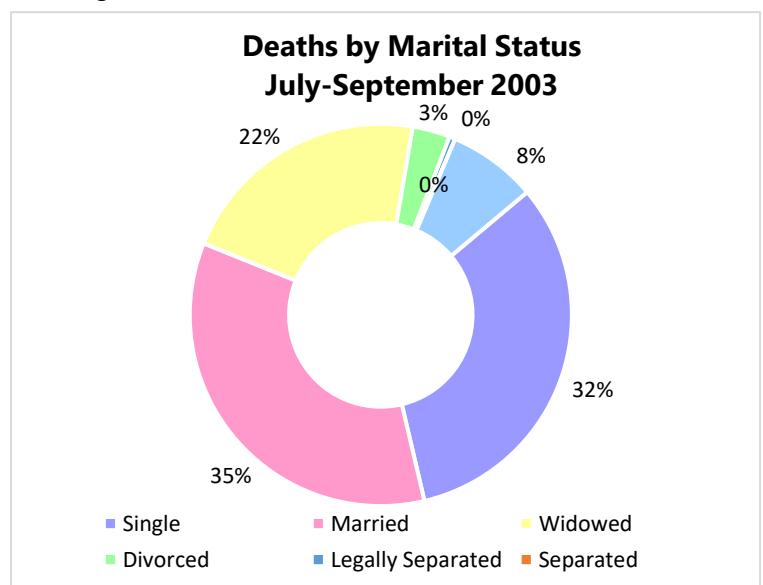


Figure 9