

# Births and Deaths Report Q4 2004

**Ratio of Births to Deaths  
Q4 2004**

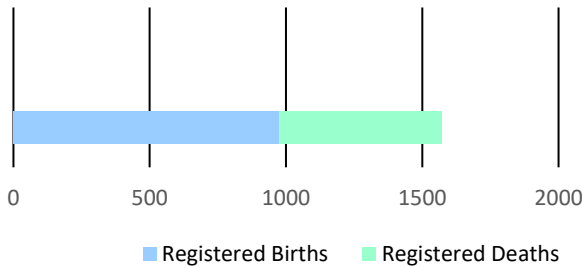


Figure 1

Births for the fourth quarter of 2004 were recorded as **974**. When making a comparison it is seen that more females were registered in this quarter than males. A reduction of **9.4 percent** in births in contrast with quarter four of 2003.

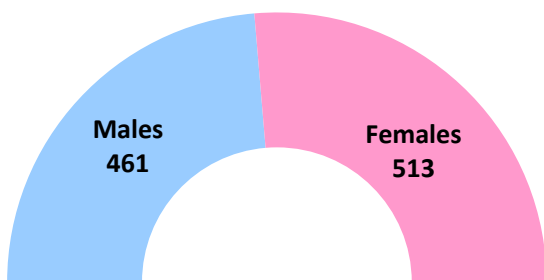
The number of registered deaths were **598** for the period under review, this is reflected by a **13.9 percent** increase in contrast with the corresponding quarter in 2003.

**Table 1: Monthly Population Change**

Month	Births	Deaths	Natural Increase
October	358	207	151
November	221	185	36
December	395	206	189
<b>TOTAL</b>	<b>974</b>	<b>598</b>	<b>376</b>

**Table 2: Quarterly Population Change**

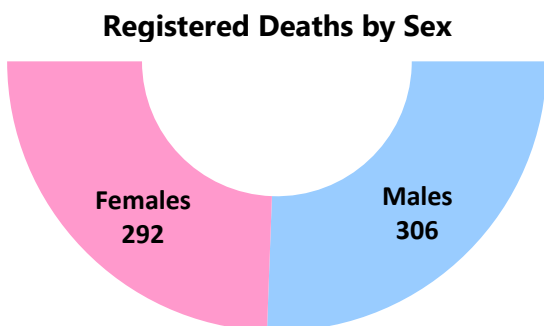
	Male	Female	Total
<b>Estimated Population at Q3 2004</b>	131,417	141,018	<b>272,435</b>
Births	461	513	974
Deaths	306	292	598
<b>Estimated Population at Q4 2004</b>	<b>131,503</b>	<b>141,161</b>	<b>272,664</b>



**Registered Births by Sex**

Figure 2

For the fourth quarter in 2004, there were **513** female registered births and **461** males. There was a **2.6 percent** increase in females and a **19.8 percent** reduction in males compared to the fourth quarter of 2003.



**Registered Deaths by Sex**

Figure 3

Registered deaths in the period under review for 2004 were reported as follows: males **306** and females – **292**. The males and females both expanded by **22.4 percent** and **6.2 percent** respectively.

**Table: 3 Births by Age of Mother and Father**

Age Group	Q4 2004		Q4 2003	
	Number of Mothers	Number of Fathers	Number of Mothers	Number of Fathers
19 and Under	140	24	122	29
20 - 29	475	390	538	374
30 - 39	319	380	374	415
40 - 49	33	132	38	138
50 - 59	0	15	0	15
60 - 69	0	2	0	2
Not Stated	7	31	3	102
<b>TOTAL</b>	<b>974</b>	<b>974</b>	<b>1,075</b>	<b>1,075</b>

The average age of a mother giving birth was **26.3** years, with **48.8 percent (475)** of the births coming from mothers in the 20-29 age group.

The number of births from mothers in the 19 and under age group were recorded as **140**.

For the period October to December 2004, the youngest mother was **one 13-year-old**, followed by **three 14-year-olds**, while the oldest mother registered was **44 years**, one year younger than the correlating period in 2003.

There was **one 16-year-old** registered as the youngest father, followed by **one 17-year-old**, while the oldest was **65 years**, four years older than in 2003.

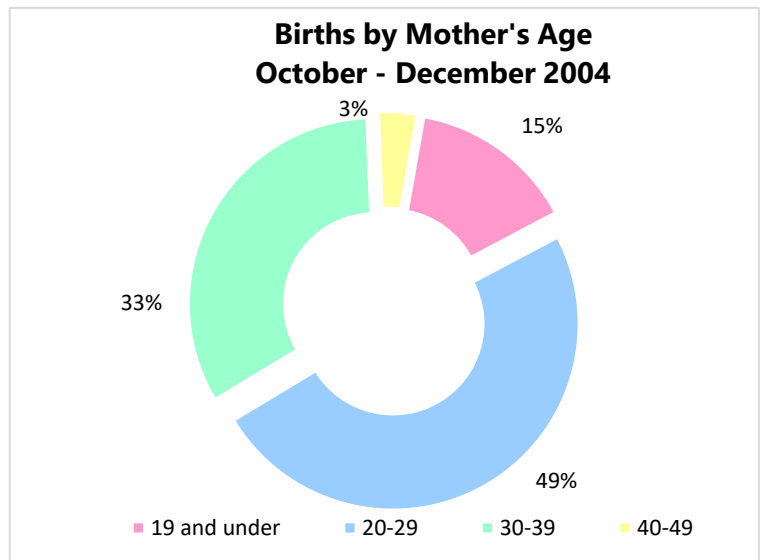


Figure 4

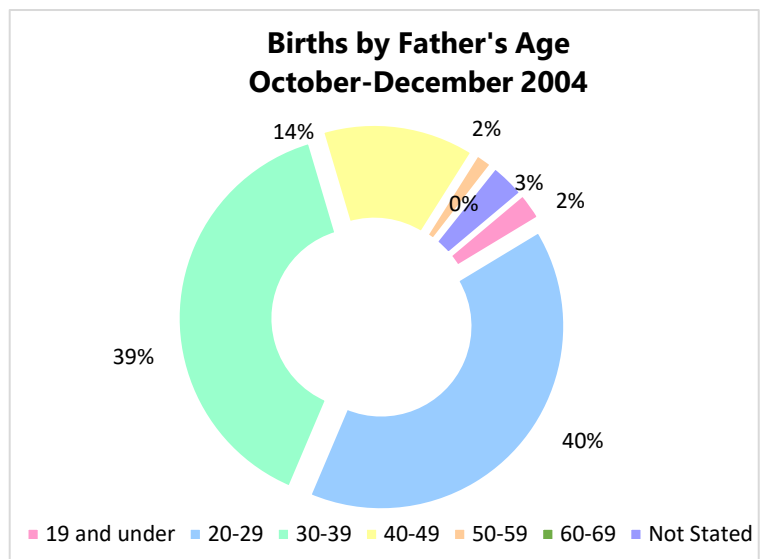
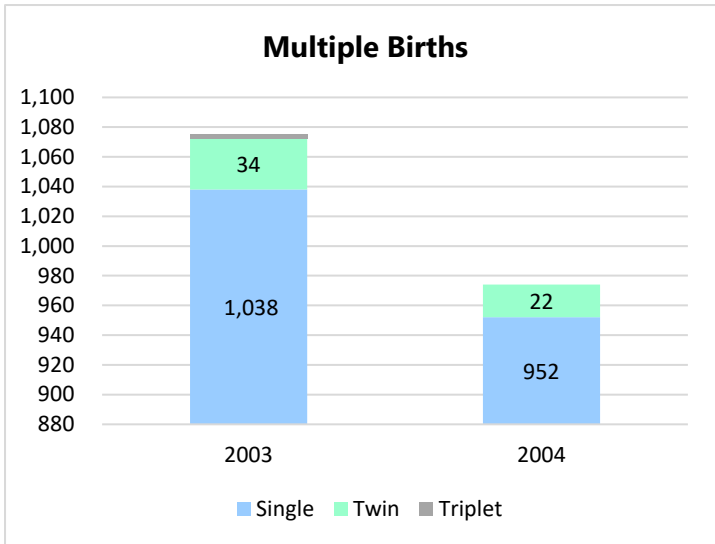


Figure 5



**952** single births were recorded in the period under review which shows a reduction of **8.3 percent**.

The number of twins were registered as **22**, twelve less than the previous year.

No triplets were registered in this period under review.

Figure 6

The number of babies from St. Michael were **342 (35.1 percent)**. There was a decrease of **9.5 percent** compared to 2003 (Quarter 4).

The number of babies for the quarter under review born in St. Thomas and St. James both were **52** and **86** respectively.

Christ Church babies represented **18.2 percent (177)** of total births for this quarter.

The least number of babies were recorded from St. Joseph – **18**, however in in quarter 4 of 2003, St. Andrew recorded the least number of registered births (**17**).

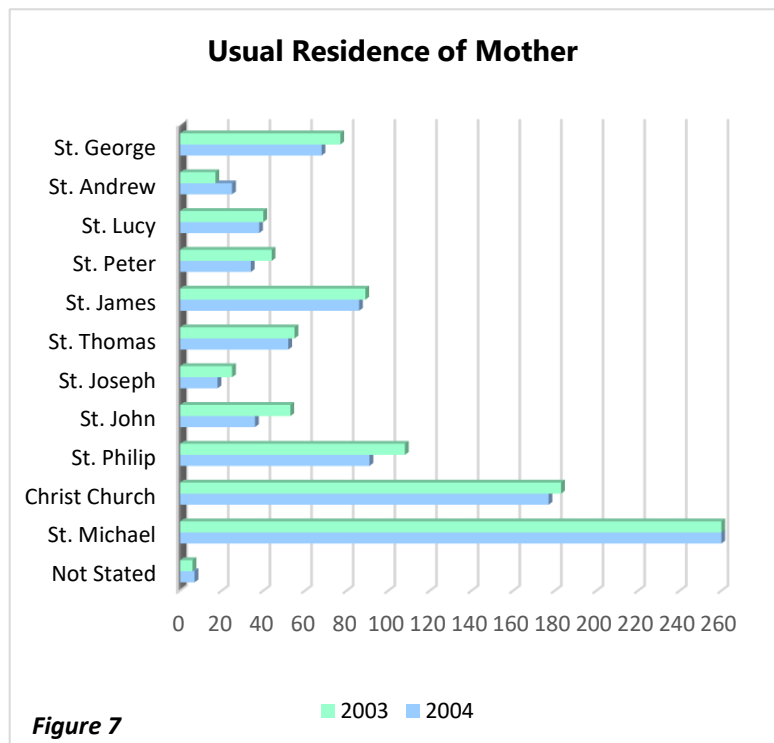


Figure 7

Table: 4 Live Births vs Still-Born

	Q4 2004	Q4 2003
Live Births	973	1,068
Still-Born	1	7
<b>TOTAL</b>	<b>974</b>	<b>1,075</b>

There were **1** still-born birth recorded in the fourth quarter of 2004, six less than the corresponding quarter in the previous year.

The average age of death during the period was **73.5** years.

The highest amount of registered deaths were seen in the **80-89** age group which represented **32.6 percent**, followed by **70-79** age group (**19.2 percent**). Also to note is the significant increase in deaths in **80-89** age group by **23.4 percent** in contrast with the corresponding quarter in the previous year.

For the fourth quarter of 2004, more males died – **306**, when compared to **292** females, however more females died (**275**) than males (**250**) in the previous comparative quarter.

In terms of marital status in the last quarter of 2004, married represented **31.3 percent** followed by single (**28.6 percent**) and widowed (**23.9 percent**).

**St. Michael** had the largest number of registered deaths – **207**. However, the least number of deaths recorded in the quarter under review was in St. Joseph - **11**.

**Table: 5 Deaths by Age Group**

Age Group	2004	2003
9 and Under	12	12
10-19	3	6
20-29	7	8
30-39	11	17
40-49	35	25
50-59	50	37
60-69	70	65
70-79	115	111
80-89	195	158
90-99	82	67
100-109	12	7
Not Stated	6	12
<b>Total</b>	<b>598</b>	<b>525</b>

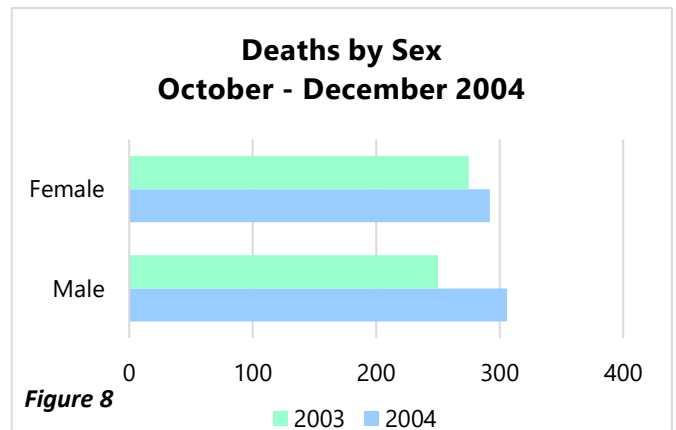


Figure 8

**Table: 6 Deaths by Residence**

Parish	2004	2003
St. Michael	207	189
Christ Church	112	105
St. Philip	47	38
St. John	17	11
St. Joseph	11	10
St. Thomas	27	18
St. James	47	56
St. Peter	28	21
St. Lucy	17	26
St. Andrew	12	10
St. George	34	39
Not Stated	39	2
<b>Total</b>	<b>598</b>	<b>525</b>

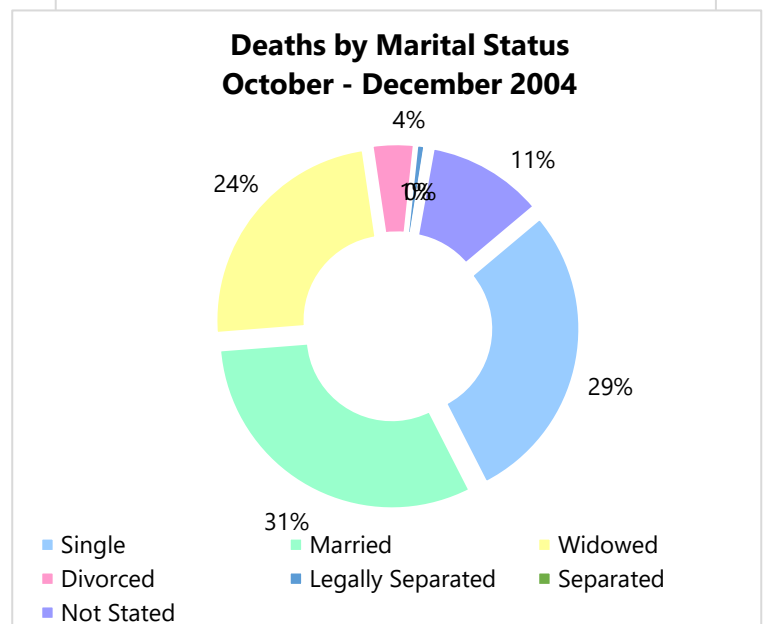


Figure 9