

Births and Deaths Report Q2 2005

**Ratio of Births to Deaths
Q2 2005**

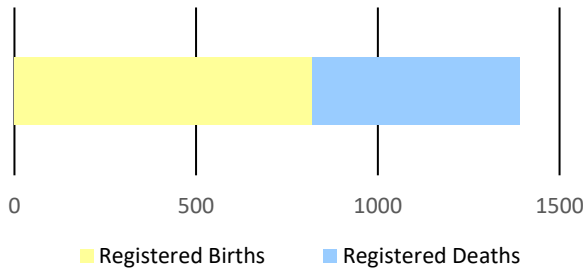


Figure 1

In the second quarter of 2005, a slight growth in births was recorded from **790** in 2004 to **820**. The percentage calculated for this comparison is only **3.79 %**. Whilst for males and female births were **3.9%** and **3.6%** respectively (**increases**).

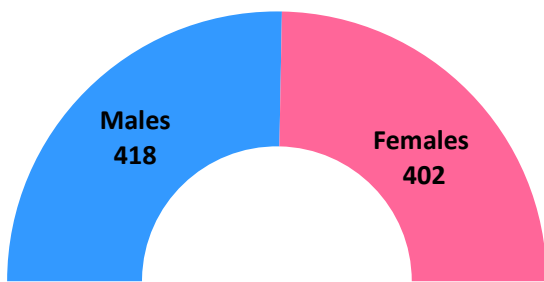
The number of registered deaths were from **596** to **570** which showed a decline of **4.4 %** for both sexes in contrast with the same period of the prior year.

Table 1: Monthly Population Change

Month	Births	Deaths	Natural Increase
April	280	140	140
May	271	195	76
June	269	235	34
TOTAL	820	570	250

Table 2: Quarterly Population Change

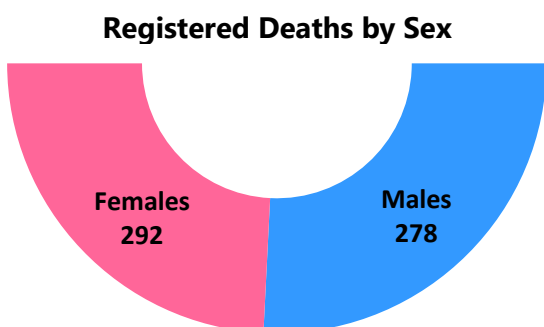
	Male	Female	Total
Estimated Population at Q1 2005	131,634	141,257	272,891
Births	418	402	820
Deaths	278	292	570
Estimated Population at Q2 2005	131,705	141,289	272,994



Registered Births by Sex

Figure 2

In the second quarter in 2005, there were **418** registered male births and **402** registered for females. For the similar period in 2004 the same figure amounted for the **males (402)** and the females totalled **388**.



Registered Deaths by Sex

Figure 3

Registered deaths in the period under review for 2005 were reported as follows: males – **278** and females – **292**. A decline of **5.8 %** for males doubling that of females with **2.9%**.

Table: 3 Births by Age of Mother and Father

	Q2 2005		Q2 2004	
Age Group	Age of Mother	Age of Father	Age of Mother	Age of Father
19 and Under	125	31	99	25
20 - 29	419	340	409	283
30 - 39	249	317	257	334
40 - 49	23	102	24	109
50 - 59	0	11	0	15
60 - 69	0	0	0	1
70-79	0	0	0	1
Not Stated	4	19	1	22
TOTAL	820	820	790	790

The average age of a mother giving birth was **25.8** years, with **51.1 percent (419)** of the births coming from mothers in the 20-29 age group.

The number of births from mothers in the 40-49 age group tallied to **23**.

For the period April to June 2005, the youngest mothers were recorded as **five 15-year-olds**, followed by **seven 16-year-olds**, while the oldest mother was registered at **48 years old**.

The youngest fathers were recorded as **five 17-year-olds**, followed by **six 18-year-olds**, while the oldest father was **56 years old** during the second quarter of 2005. For 2004, the oldest father was **one 75 years old**.

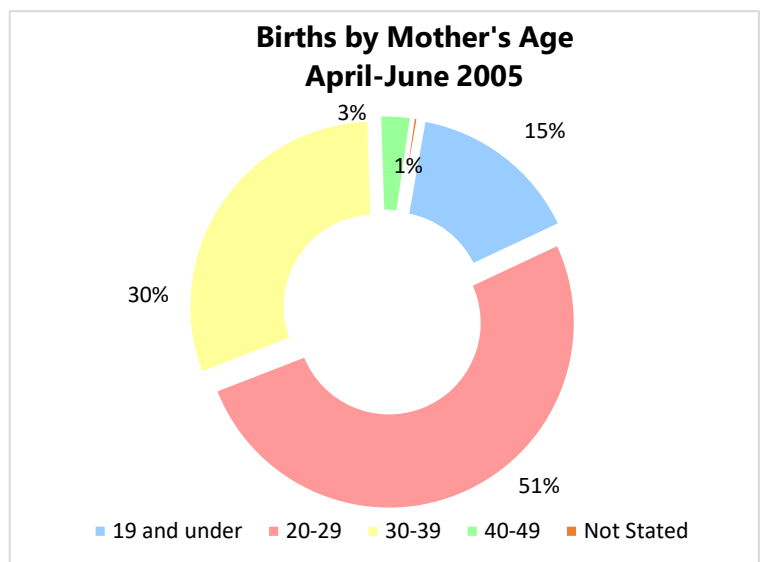


Figure 4

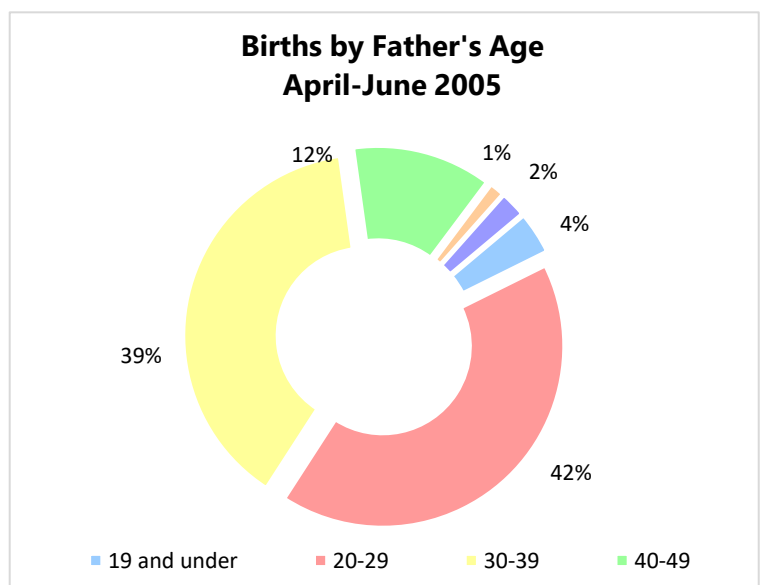
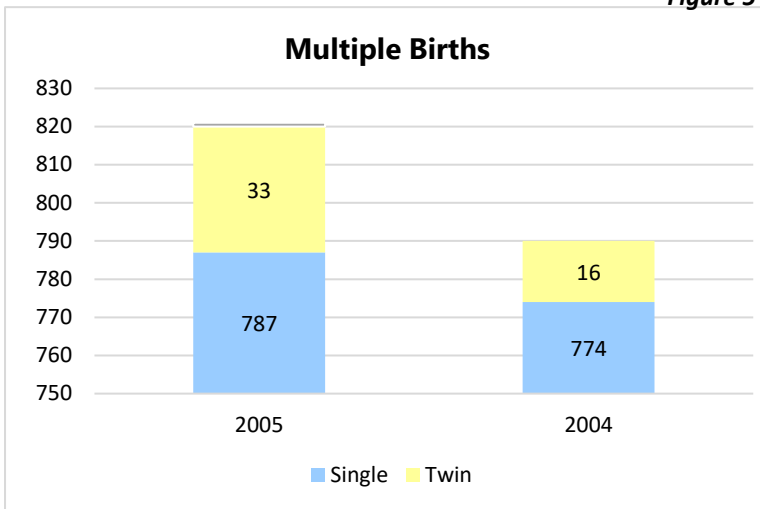


Figure 5



An increase was noted in the number of single babies registered in the period under review, moving from **790** in 2004 to **820**.

The number of twins increased in 2005 to **33** from **16**.

No triplets were born in the period under review in 2005.

Quarter 2 of 2005 saw decreases in only three parishes for births from among the eleven parishes.

The number of babies from St. Michael rose to **301 from 279 (7.8 percent)** yet remained the parish with the highest number of births.

The parish of Christ Church followed with the second highest number of births with **133 from 144 (7.6 percent)** in 2004.

The least number of babies were recorded from the parish of St. Andrew with **22**, followed a tie between St. John and St. Joseph with **28**.

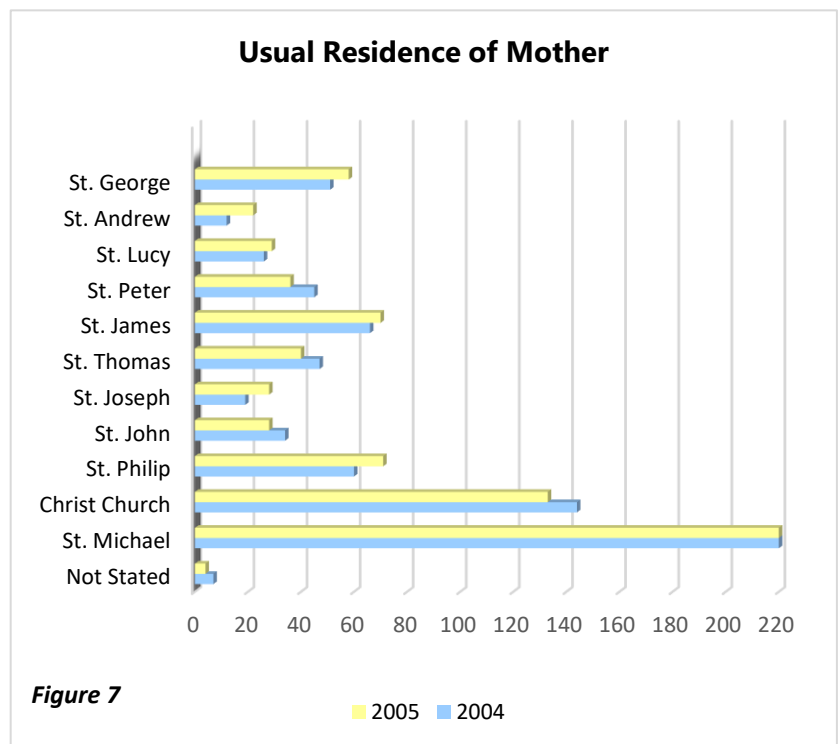


Figure 7

Table: 4 Live Births vs Still-Born

	Q2 2005	Q2 2004
Live Births	818	787
Still Born	2	3
Total	820	790

There were **2** still births recorded in the second quarter of 2005 whilst when compared to 2004 there were **3** still births.

A decline of **4.3 percent** was observed in the number of deaths recorded for the period under review.

The average age of death during the period was **72.2** years.

The largest number of registered deaths came from the **80-89 years** age group which showed **3.8 percent (increase)**, followed by the **70-79** age group with **7.6 percent (decrease)**.

In April to June 2005, the larger number of deaths was attributed to **292** females, when compared to **278** males, whereas in the same period for 2004, **301** females passed away, along with **295** males.

With regards to marital status in 2005, single persons for **33.5 percent** of all deaths, followed by married which stood at **28.1 percent**.

St. Michael had the largest number of registered deaths – **227** for Q2 of 2005 and **225** for 2004. However, the least number of deaths were recorded in both 2005 and 2004 was in the parish of **St. Andrew** with **9** deaths.

Table: 5 Deaths by Age Group

Age Group	2005	2004
9 and Under	16	17
10-19	9	4
20-29	10	10
30-39	17	15
40-49	28	34
50-59	37	54
60-69	56	63
70-79	134	145
80-89	162	156
90-99	85	73
100-109	12	5
Not Stated	4	20
TOTAL	570	596

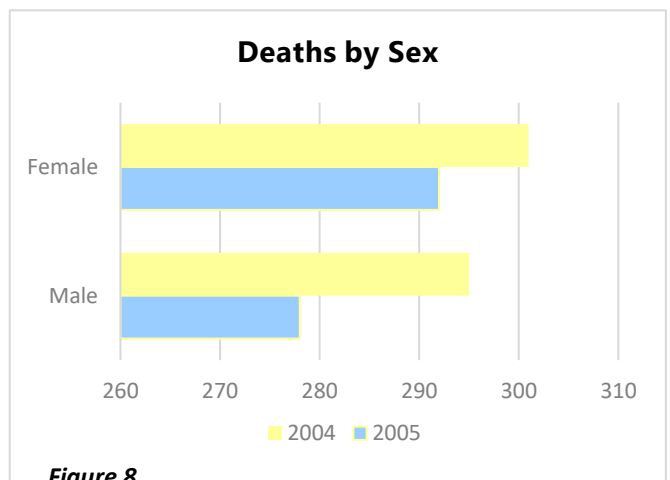


Figure 8

Table: 6 Deaths by Residence

Parish	2005	2004
St. Michael	227	225
Christ Church	93	108
St. Philip	48	67
St. John	15	24
St. Joseph	13	16
St. Thomas	24	33
St. James	37	35
St. Peter	26	23
St. Lucy	15	27
St. Andrew	9	9
St. George	40	27
Not Stated	23	2
TOTAL	570	596

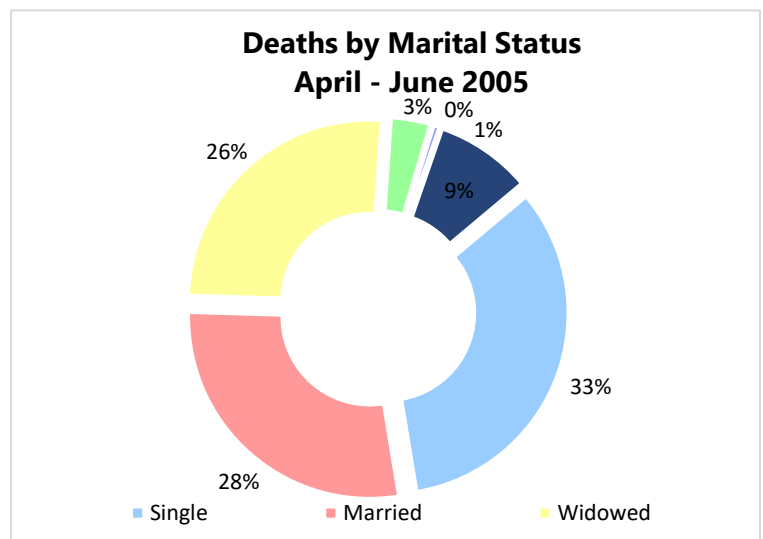


Figure 9