

# Births and Deaths Report Q1 2008

**Ratio of Births to Deaths  
Q1 2008**

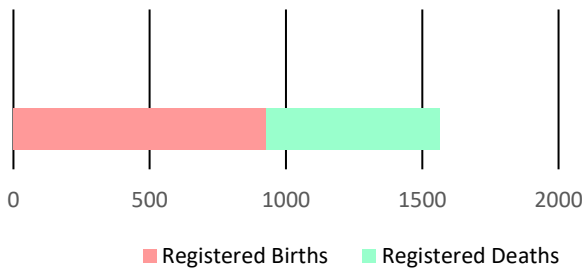


Figure 1

The first quarter of 2008 recorded an increase of **11.1 percent** in births, from **835** in 2007 to **928** in 2008. In 2008, a **13.2 percent** increase was recorded in male births, while there was a rise of **8.8 percent** for females.

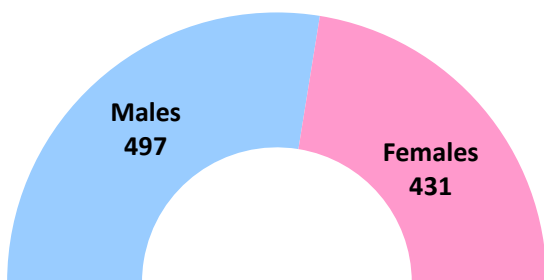
With regards to the number of registered deaths, an increase of **12.9 percent** was observed. The number of male and female deaths recorded increased in comparison with quarter 1 of 2007.

**Table 1: Monthly Population Change**

Month	Births	Deaths	Natural Increase
January	367	237	130
February	299	203	96
March	262	197	65
<b>TOTAL</b>	<b>928</b>	<b>637</b>	<b>291</b>

**Table 2: Quarterly Population Change**

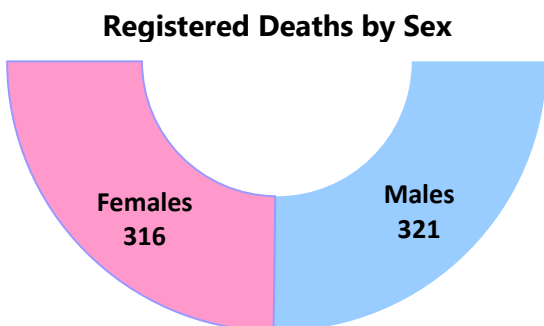
	Male	Female	Total
<b>Estimated Population at End of Q4 2007</b>	132,668	142,020	<b>274,688</b>
Births	497	431	928
Deaths	321	316	637
<b>Estimated Population at Q1 2008</b>	<b>132,775</b>	<b>142,057</b>	<b>274,832</b>



**Registered Births by Sex**

Figure 2

For the first quarter in 2008, there were **431** female registered births and **497** males. For the similar period in 2007, there were **439** males and **396** females.



**Registered Deaths by Sex**

Figure 3

Registered deaths in the period under review for 2008 were reported as follows: males – **321** and females – **316**. Males increased by **7.7 percent** and the females also saw an increase of **18.8 percent**.

**Table: 3 Births by Age of Mother and Father**

	Q1 2008		Q1 2007	
Age Group	Age of Mother	Age of Father	Age of Mother	Age of Father
19 and Under	115	17	101	26
20 - 29	454	340	423	333
30 - 39	318	376	271	327
40 - 49	37	158	39	120
50 - 59	0	15	0	14
60 - 69	0	2	0	3
70-79	0	1	0	0
Not Stated	4	19	1	12
<b>TOTAL</b>	<b>928</b>	<b>928</b>	<b>835</b>	<b>835</b>

The average age of a mother giving birth was **27.5** years, with **50.8 percent (454)** of the births coming from mothers in the **20-29** age group.

The number of births from mothers in the **40-49** age group increased by **2**.

For the period January to March 2008, the youngest mothers were **two 14 year olds**, followed by **seven 15 year olds** while the oldest mother was registered as **46 years old** which was **3 years** younger than the previous year.

There were **three 17 year olds** registered as the youngest fathers, followed by **five 18 year olds**, while the oldest was **71 years**. **Five years** older than in the first quarter of 2007.

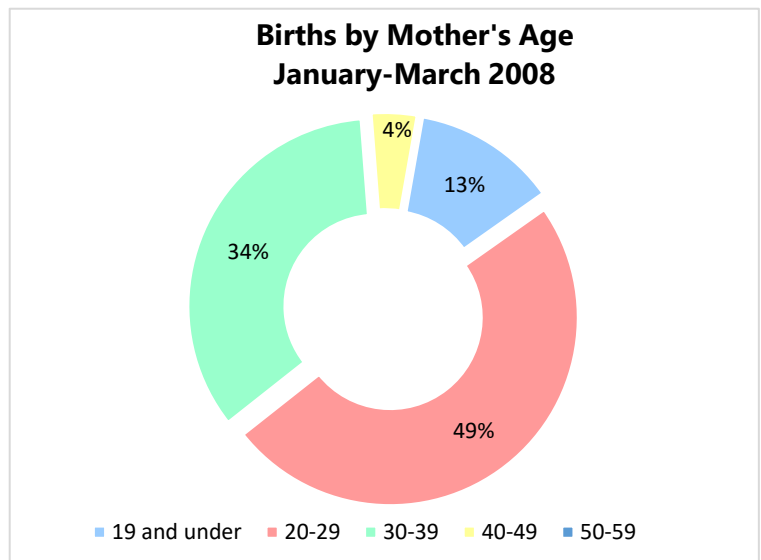


Figure 4

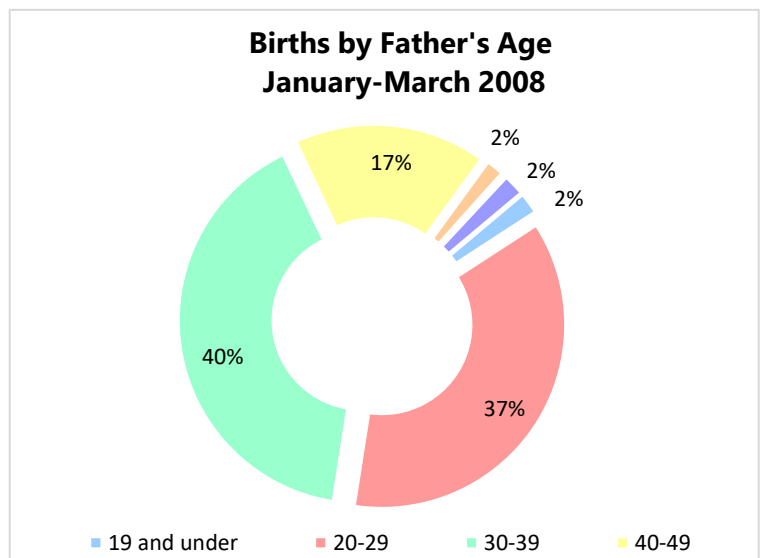


Figure 5

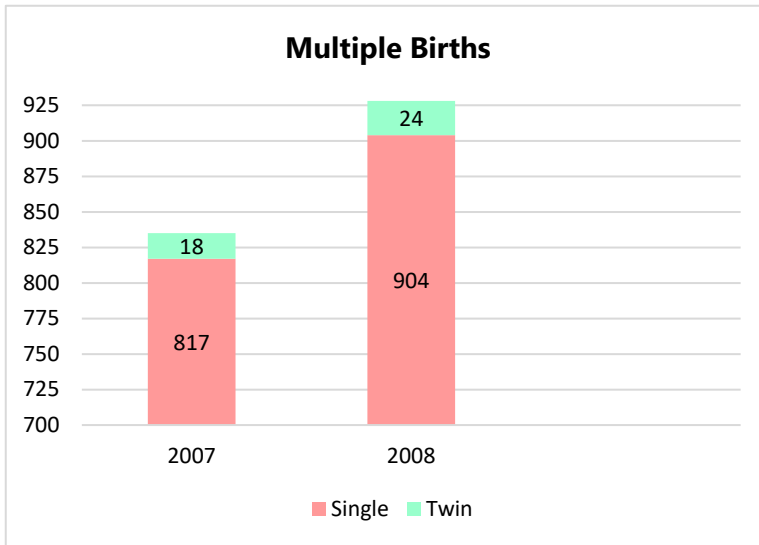


Figure 6

The number of babies from St. Michael recorded were **347 (37.4 percent)**. This parish recorded the highest number of births in comparison to **295** babies in the comparative quarter.

The number of babies for the quarter under review born in Christ Church was **158** which represents **17.1 percent**.

The least number of babies were from St. Joseph - **18**.

An increase was noted in the number of single babies, there were **904** registered compared to **817** in the comparative period in 2007.

The number of twins increased from **9 sets** in the first quarter of 2007 to **12 sets** in this quarter.

No triplets were born in the period under review in 2008.

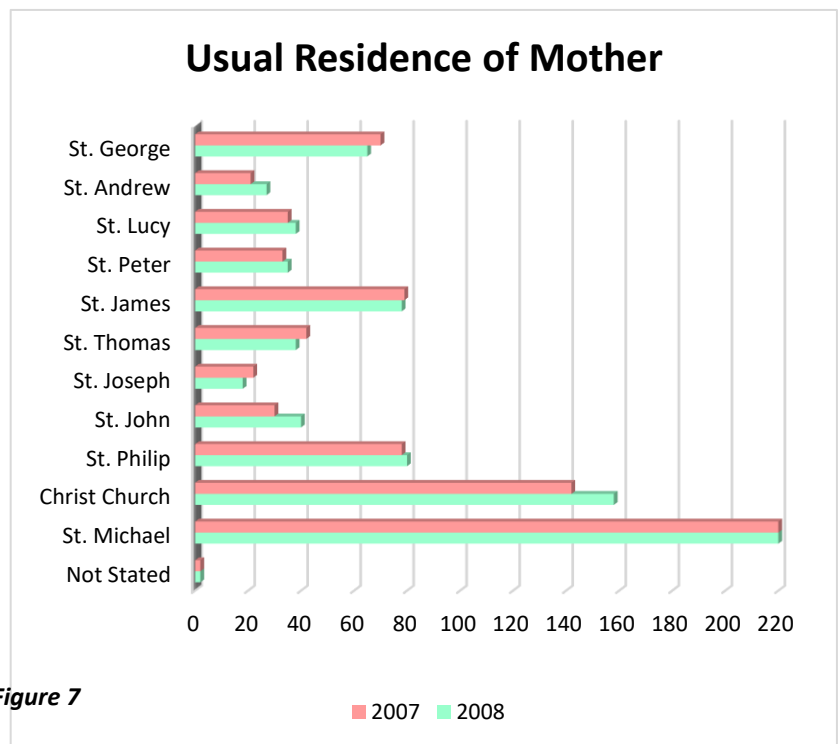


Figure 7

Table: 4 Live Births vs Still-Born

	Q1 2008	Q1 2007
Live Births	924	832
Still-Born	4	3
<b>Total</b>	<b>928</b>	<b>835</b>

There were **4** still-born births recorded in this quarter, as well as **3** in the comparative period in 2007.

The average age of death during the period was **72.1** years.

The highest age group in registered deaths was seen in the **80-89 (30.4 percent)**, followed by **70-79 (21.4 percent)**.

In January to March 2008, the larger number of deaths was attributed to males – **321**, when compared to **316** females.

With regards to marital status in 2008, the single persons accounted for **33.3 percent** of all deaths, followed by divorced which stood at **1.1 percent**.

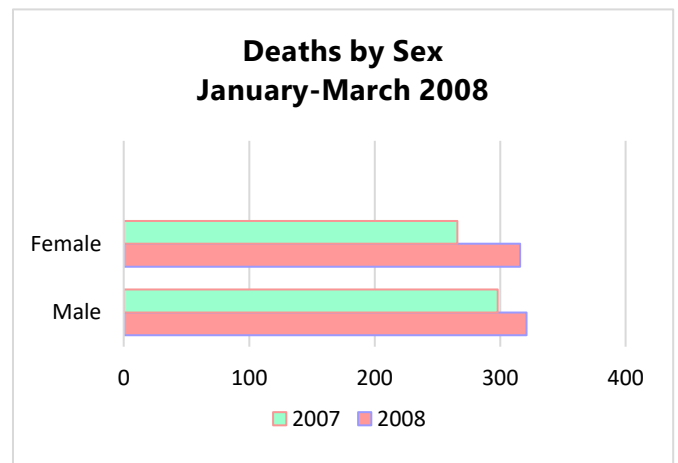
For Q1 of 2008, **St. Michael**, had the largest number of registered deaths – **201**, an increase of **1.49 percent** compared to **200** in 2007. However, the least number of deaths were recorded in 2008 was in **St. Andrew (11)**, while in 2007 it was **St. Joseph (13)**.

**Table: 5 Deaths by Age Group**

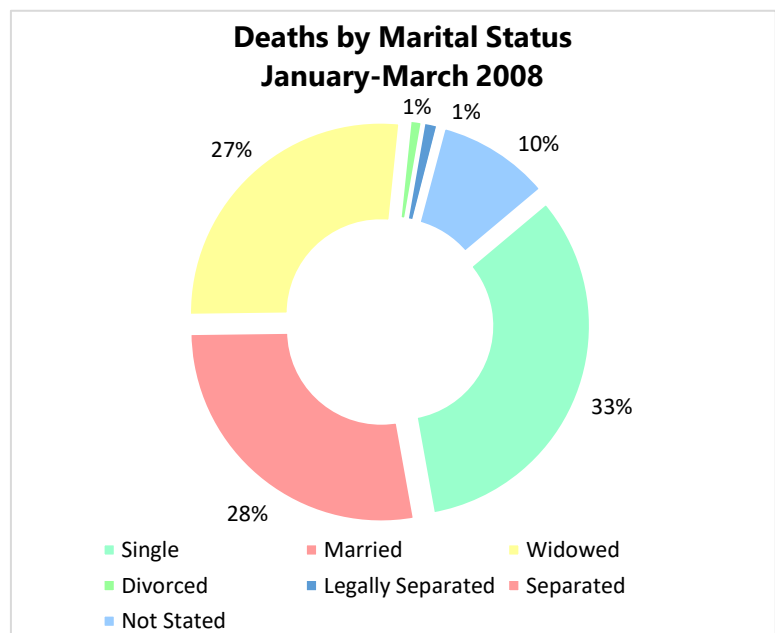
Age Group	2008	2007
9 and Under	26	18
10-19	3	5
20-29	7	18
30-39	15	17
40-49	31	35
50-59	47	54
60-69	74	62
70-79	136	107
80-89	193	161
90-99	96	80
100-109	9	6
N/S	0	1
<b>TOTAL</b>	<b>637</b>	<b>564</b>

**Table 6: Deaths by Parish**

Parish	2008	2007
St. Michael	201	200
Christ Church	114	114
St. Philip	56	53
St. John	21	18
St. Joseph	15	13
St. Thomas	31	28
St. James	47	41
St. Peter	21	18
St. Lucy	19	13
St. Andrew	11	14
St. George	39	39
Not Stated	62	13
<b>TOTAL</b>	<b>637</b>	<b>564</b>



**Figure 8**



**Figure 9**