

Births and Deaths Report Q2 2008

**Ratio of Births to Deaths
Q2 2008**

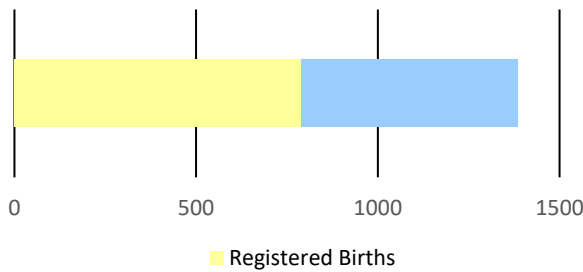


Figure 1

Quarter two of 2008 recorded a reduction in births of **0.3 percent** from **778** in 2007 to **776**. In 2008, a **6.9 percent** decrease was recorded in male births, while there was a rise of **7.6 percent** for females.

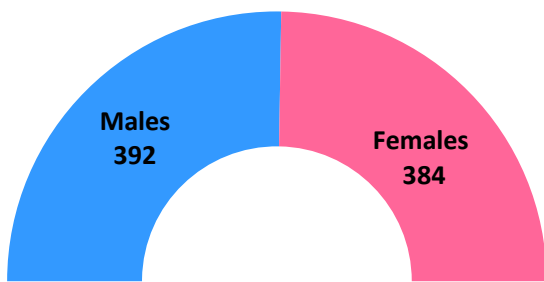
The number of registered deaths showed an increase of **13.0 percent** for the period under review. The number of male and female deaths recorded an expansion of **11.0** and **15.3 percent** in that order.

Table 1: Monthly Population Change

Month	Births	Deaths	Natural Increase
April	278	214	64
May	261	204	57
June	237	198	39
TOTAL	776	616	160

Table 2: Quarterly Population Change

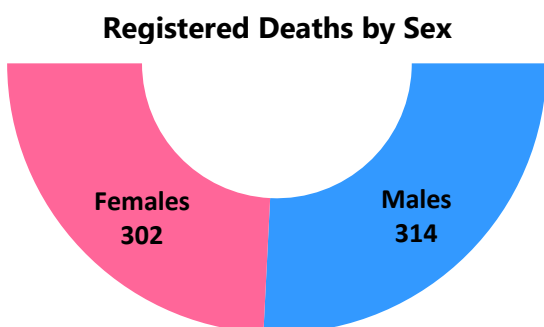
	Male	Female	Total
Estimated Population at Q1 2008	132,775	142,057	274,832
Births	392	384	776
Deaths	314	302	616
Estimated Population at Q2 2008	132,784	142,061	274,845



Registered Births by Sex

Figure 2

In the second quarter in 2008, there were **384** female registered births, **8** less than that of males (**392**); contrarily, in the same quarter of 2007, **357** females were registered when compared to **421** males.



Registered Deaths by Sex

Figure 3

Registered deaths in the period under review for 2008 were reported as follows: males – **314** and females -**302**, this is in comparison with **283** males and **262** females in the previous period in 2007.

Table: 3 Births by Age of Mother and Father

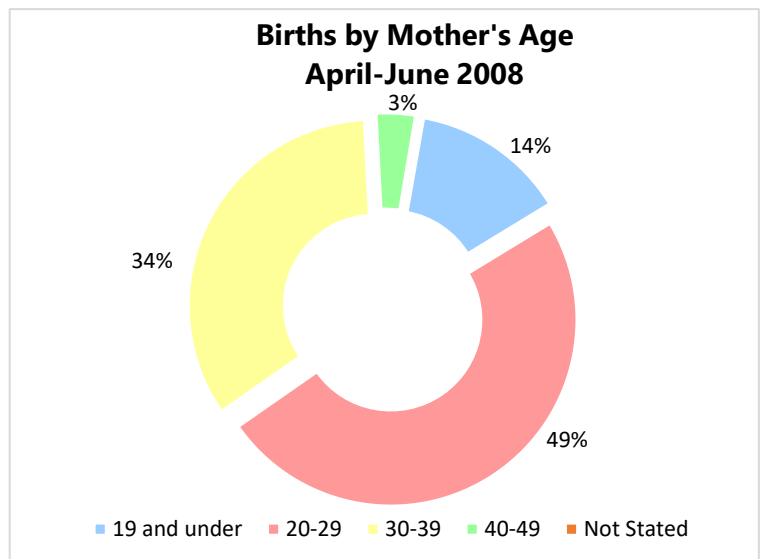
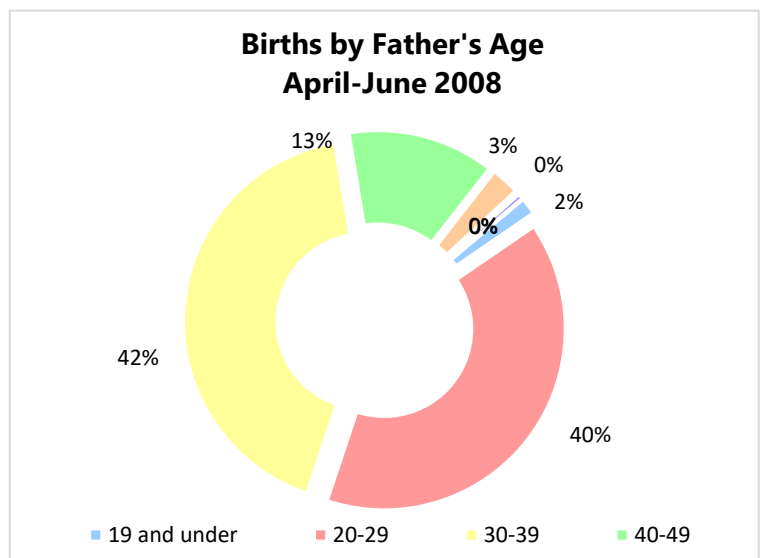
Age Group	Q2 2008		Q2 2007	
	Age of Mother	Age of Father	Age of Mother	Age of Father
19 and Under	105	12	92	17
20 - 29	381	308	383	291
30 - 39	263	328	255	317
40 - 49	27	102	47	127
50 - 59	0	20	0	17
60 - 69	0	2	0	3
70-79	0	1	0	0
Not Stated	0	4	1	6
Total	776	776	778	778

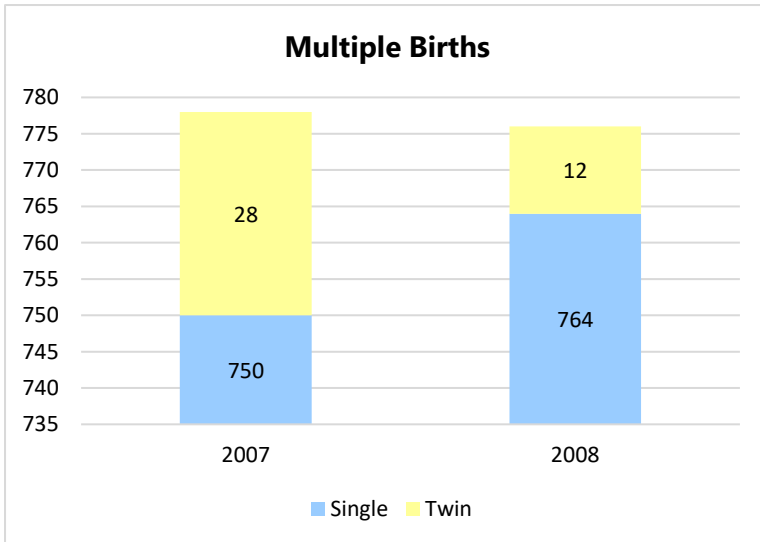
The average age of a mother giving birth was **27.3** years, with **49.1 percent (381)** of the births coming from mothers in the 20-29 age group.

The number of births from mothers in the 40-49 age group dropped to **27**.

For the period April to June 2008, the youngest mother was **14 years old**, followed by four **15 year olds**, while the oldest mother registered was **45 years old**, in 2007 that stood at **49 years old**. Also, in 2007, the youngest mother was **13 years**.

The youngest father was also recorded at **15 years old**, followed by **one 16 year old**, while the oldest was **67 years old** during the second quarter of 2008. For 2007, the oldest father was **63 years old**, while the youngest were **three 16 year olds**.


Figure 4

Figure 5



An increase was noted in the number of single babies registered in the period under review, moving from **750** in 2007 to **764**.

The number of twins decreased in 2008 from **14 sets** to **6**.

No triplets were born in the period under review in 2008.

Figure 6

St. Michael remained the parish with the highest number of births with **282 (36.4 percent)**.

The number of babies for the quarter under review born in St. Lucy dropped by **1** to **32**.

St. Philip babies contracted to **60** from **83**.

The least number of babies were recorded from St. Joseph – **21**, followed by St. Andrew with **26**.

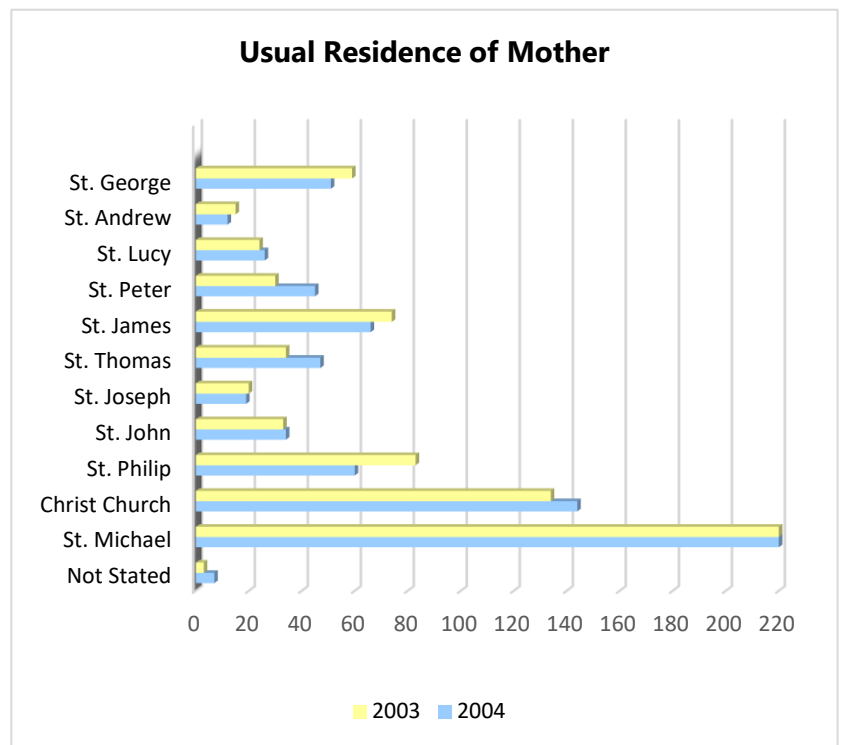


Figure 7

Table: 4 Live Births vs Still-Born

	Q2 2008	Q2 2007
Live Births	773	776
Still-Born	3	2
Total	776	778

There were **3** still-born births recorded in the second quarter of 2008 when compared to the **2** still births in 2007.

An expansion of **13 percent** was observed in the number of deaths recorded for the period under review.

The average age of death during the period was **72.2** years.

The largest number of registered deaths came from the **80-89 years** age group which represented **25.2** percent, followed by the **70-79** age group (**21.6 percent**).

In April to June 2008, the least number of deaths was attributed to females – **302**, when compared to **314** males, whereas in the same period for 2007, **283** males passed away, along with **262** females.

With regards to marital status in 2008, single persons accounted for **34.6 percent** of deaths, followed by married which stood at **29.1 percent**.

St. Michael had the largest number of registered deaths – **179** for Q2 of 2008 and **184** for 2007. However, the least number of deaths were recorded in 2008 was in **St. Andrew** with **8** and 2007 **St. Joseph** with **9**.

Table: 5 Deaths by Age Group

Age Group	2008	2007
9 and Under	18	9
10-19	3	1
20-29	9	10
30-39	10	16
40-49	44	27
50-59	68	52
60-69	83	59
70-79	133	131
80-89	155	146
90-99	80	85
100-109	12	8
Not Stated	1	1
TOTAL	616	545

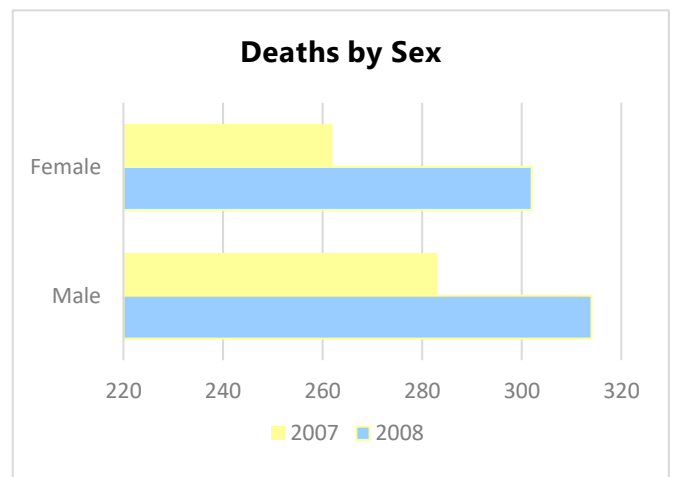


Figure 8

Table: 6 Deaths by Residence

Parish	2008	2007
St. Michael	179	184
Christ Church	109	114
St. Philip	45	48
St. John	21	25
St. Joseph	13	9
St. Thomas	27	24
St. James	39	46
St. Peter	27	16
St. Lucy	20	22
St. Andrew	8	10
St. George	43	41
Not Stated	85	6
TOTAL	616	545

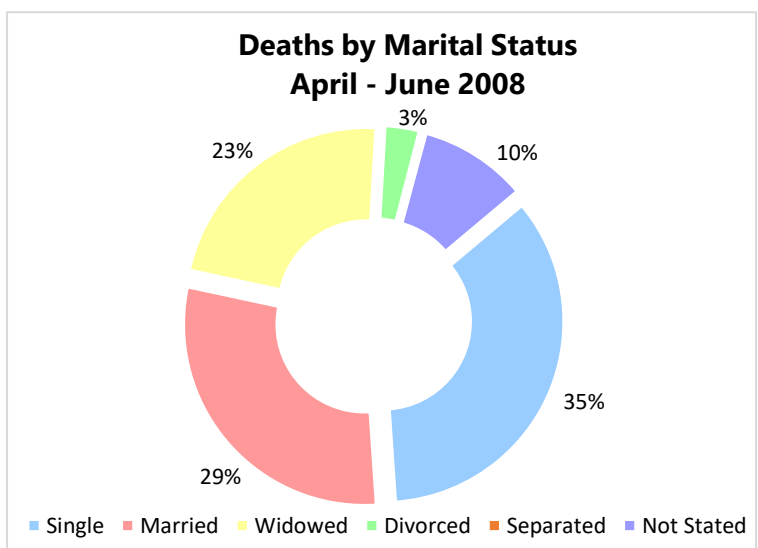


Figure 9