

Births and Deaths Report Q4 2008

**Ratio of Births to Deaths
Q4 2008**

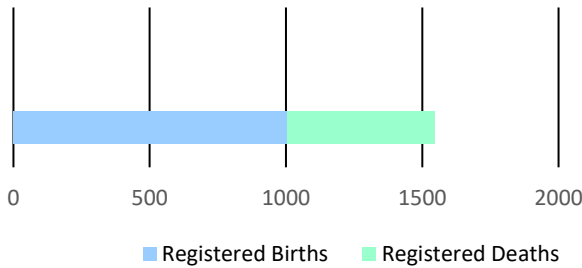


Figure 1

Births for the fourth quarter of 2008 were recorded as **1004**, a lower number than the comparative 2007 fourth quarter period - **1085**. It was also noted that fewer females - **489** were registered in this quarter than males - **515**.

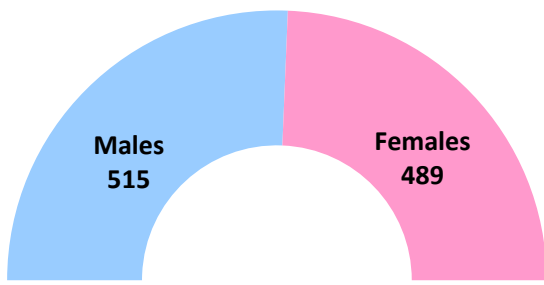
The number of registered deaths were **542** for the period under review. This reflected a **2.5 percent** decrease in contrast with the corresponding quarter in 2007.

Table 1: Monthly Population Change

Month	Births	Deaths	Natural Increase
October	394	221	173
November	270	169	101
December	340	152	188
TOTAL	1004	542	462

Table 2: Quarterly Population Change

	Male	Female	Total
Estimated Population at Q3 2008	132,796	142,058	274,854
Births	515	489	1004
Deaths	255	287	542
Estimated Population at Q4 2008	132,987	142,182	275,169



Registered Births by Sex

Figure 2

For the fourth quarter in 2008, there were **489** female registered births and **515** males. In 2007, there were **520** females, and **565** males recorded. This showed a **5.9 percent decrease** in females and a **8.8 percent decrease** in males compared to 2007.

Registered Deaths by Sex

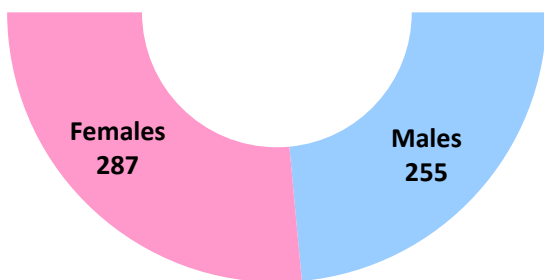


Figure 3

Registered deaths in the period under review for 2008 were reported as follows: males - **255** and females - **287**. In 2007, there were **281** males and **275** females. The male deaths decreased by **9.3 percent** and females deaths expanded by **4.4 percent**.

Table: 3 Births by Age of Mother and Father

	Q4 2008		Q4 2007	
Age Group	Age of Mother	Age of Father	Age of Mother	Age of Father
19 and Under	128	26	166	33
20 - 29	489	383	486	385
30 - 39	347	391	381	412
40 - 49	39	145	52	165
50 - 59	0	22	0	23
60 - 69	0	3	0	3
Not Stated	1	34	0	64

The average age of a mother giving birth was **27.4 years**, with **48.7 percent (489)** of the births coming from mothers in the 20-29 age group.

The number of births from mothers in the **19 and under** age group were recorded as **128**, which was **22.9 percent** less than quarter 4 of 2007.

For the period October to December 2008, the youngest mothers were **two 13 year olds**, followed by **one 14 year old**. The oldest mother registered was **48 years, two years older** than the correlating period in 2007.

There were **two 16 year olds** registered as the youngest fathers, followed by **one 17 year old**, while the oldest was **62 years, six years younger** than in 2007.

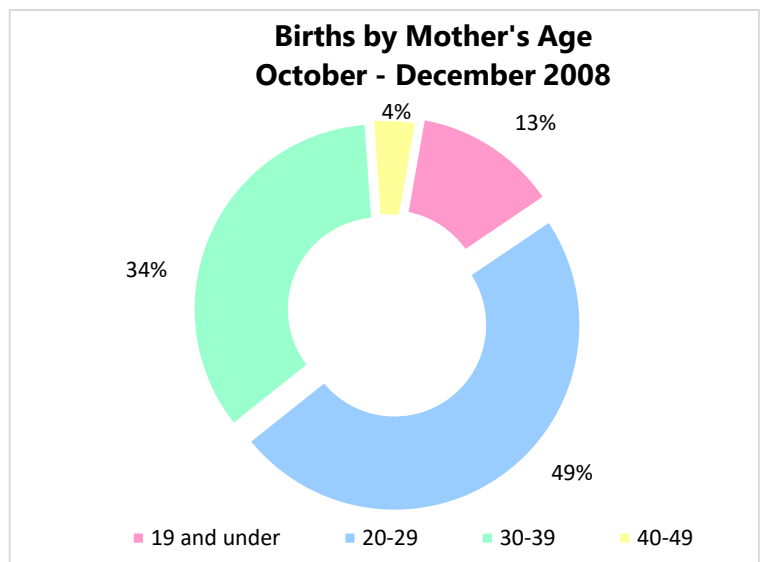


Figure 4

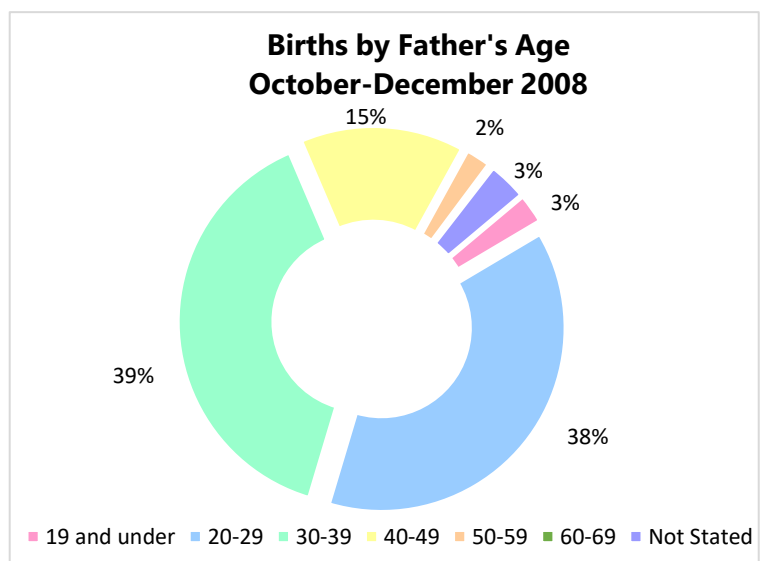


Figure 5

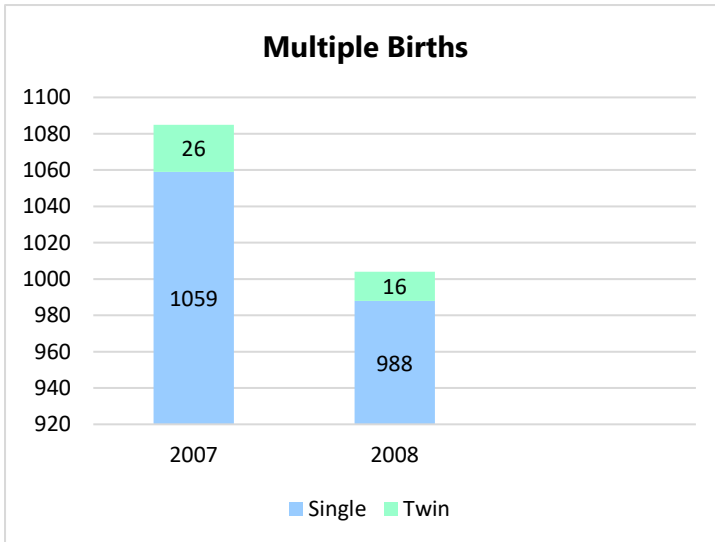


Figure 6

988 single births were recorded in the period under review which shows a reduction of **6.7 percent**.

The number of twins were registered as **16, ten less** than the previous year.

No triplets were registered in this period under review.

The number of babies from St. Michael were **360 (35.9 percent)**. Indicating a decrease of **11.1 percent** compared to 2007 (Quarter 4).

The number of babies for the quarter under review born in St. Thomas and St. James both were **55** and **85** respectively.

Christ Church babies represented **15.3 percent (154)** of total births for this quarter.

The least number of babies were recorded from St. Andrew – **24**, however in in quarter 4 of 2007, St. Joseph recorded the least amount of registered births (**23**).

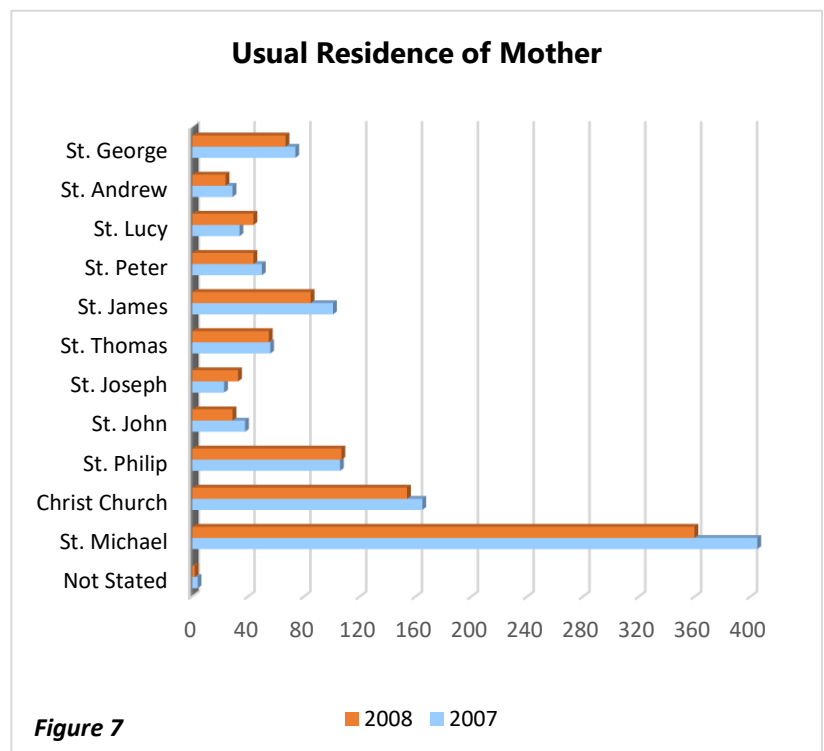


Figure 7

Table: 4 Live Births vs Still-Born

	Q4 2008	Q4 2007
Live Births	1002	1079
Still-Born	1	6
Total	1003	1085

There was **1** still-born birth recorded in the fourth quarter of 2008, **5** less than the corresponding quarter in the previous year.

The average age of death during the period was **72.3** years.

The highest amount of registered deaths were seen in the **80-89** age group which represented **31.2 percent**, followed by **70-79** age group (**21.8 percent**). Also to note is the increase in deaths in **80-89** age group by **9.8 percent** in contrast with the corresponding quarter in the previous year.

For the fourth quarter of 2008, more females died – **287**, when compared to **255** males, however more males died (**281**) than females (**275**) in the previous comparative quarter.

In terms of marital status in the last quarter of 2008, married persons represented **25.8 percent** of deaths followed by single (**34.9 percent**) and widowed (**26 percent**).

St. Michael, had the largest number of registered deaths – **235**. However, the least number of deaths recorded in 2008 was in **St. Andrew** **7**.

Table: 5 Deaths by Age Group

Age Group	2008	2007
9 and Under	11	14
10-19	3	4
20-29	10	8
30-39	14	16
40-49	31	32
50-59	52	45
60-69	52	67
70-79	118	123
80-89	168	153
90-99	68	74
100-109	8	4
Not Stated	7	16
Total	542	556

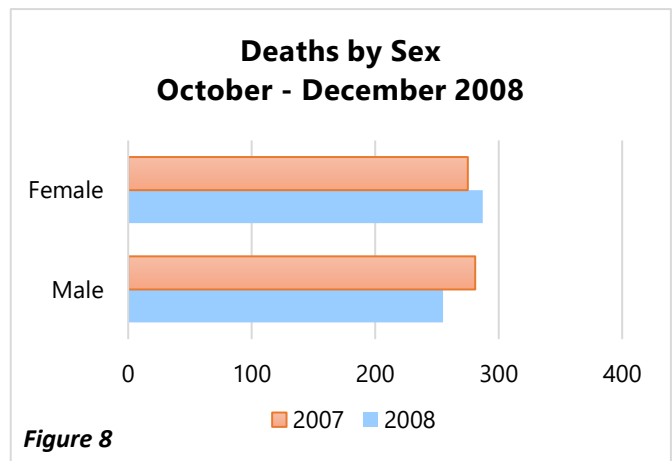


Figure 8

Table: 6 Deaths by Residence

Parish	2008	2007
St. Michael	235	184
Christ Church	101	89
St. Philip	33	58
St. John	16	15
St. Joseph	12	16
St. Thomas	20	22
St. James	30	48
St. Peter	19	22
St. Lucy	21	13
St. Andrew	7	9
St. George	36	23
Not Stated	12	57
Total	542	556

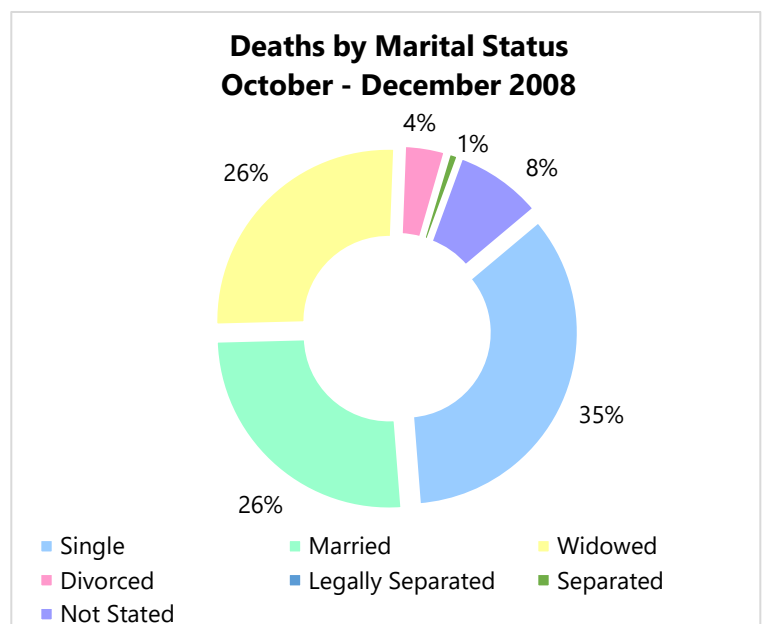


Figure 9